

# Paul Klee Inspired Maths

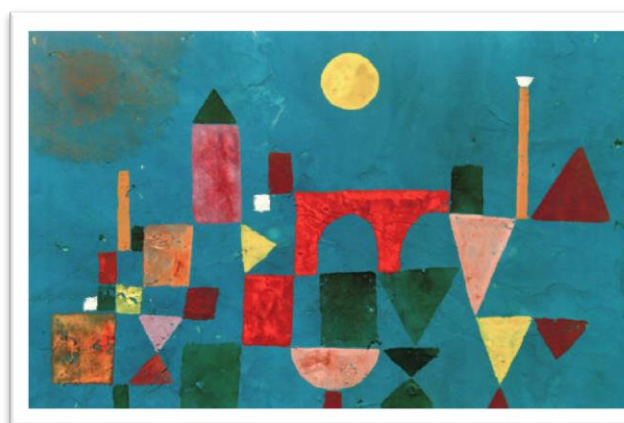
## Who was Paul Klee?

Paul Klee was one of the most famous painters of the 20<sup>th</sup> century. He made over 10,000 paintings and drawings in his lifetime and his artwork is displayed in museums all over the world.

He was influenced by movements such as cubism, surrealism and expressionism but also appreciated the simplicity of children's art (shown in the examples below).



Castle and Sun



Red Bridge

Klee liked to paint structures in their simplest form, portraying buildings, bridges and towers as a series of two dimensional shapes to create city scenes. You will spot a coloured rectangle in several of his works!

## Why not create your own Paul Klee inspired Artwork

Think about how you can fit triangles, rectangles, squares and circles to make your own castle or city scene. You may choose to draw your own shapes using a pencil and ruler or perhaps you have objects at home you could draw around.

**Paul Klee cleverly used colour to give depth to his city. What colours will you use?**



For more fun activities visit [www.mathsontoast.org.uk](http://www.mathsontoast.org.uk)

Don't forget to share your creations and comments on Twitter, Facebook or Instagram tagging @mathsontoast using #positiveaboutmaths



You could even cut out shapes from coloured paper.



Can you fill the paper without overlapping any shapes?

### Further challenges

- Count the number of each shape you have used and create a bar graph.
- Work out what fraction of your art work is taken up by each shape.



### Why's this maths?

You're exploring shape properties (sides, corners and vertices) as you fit them together to design your art work. You will be interpreting and recording data when you create your graph and investigating fractions in a creative way.

For more fun activities visit [www.mathsontoaast.org.uk](http://www.mathsontoaast.org.uk)

Don't forget to share your creations and comments on Twitter, Facebook or Instagram tagging @mathsontoaast using #positiveaboutmaths