

maths on toast
the family maths charity



Registered charity no. 1151486
Registered company no. 08196529



ANNUAL REPORT
1 SEPTEMBER 2019 TO 31 AUGUST 2020



ANNUAL REPORT

1 SEPTEMBER 2019 TO 31 AUGUST 2020

Contents

Section 1: From our leadership team **4**

From the Chief Executive

From the Trustees

2019/2020 Stats

Thanks

The Need and Theory of Change

Toast Model

Section 2: A year of two halves **12**

Planned strategy 2019/2020
and Covid-19 adaptations and impact

September 2019 – February 2020
Creative maths in the community

March – August 2020
Maths on Toast's response to Covid-19

Reach & engagement across the year

Our team **26**

Trustees' Report and Accounts **28**

Section 1: From our leadership team

From the Chief Executive

I know I will not be the only CEO looking back and opening this year's report by declaring 'what a year'. Before I continue, I would like to take the opportunity to offer thanks to everyone who has been carrying out frontline work throughout these difficult and unprecedented times.

At Maths on Toast, we have had to pause and adjust; think and adapt. We are lucky that as a team we have not faced any hardship, and as an organisation we have strong and supportive funders. Huge thanks to these funders for allowing us the time and space to respond to the changes of the past year in the best way we could.

The year started well as in September 2019, we grew! Having said a fond farewell to Francesca Piacentini, we welcomed Susan Bugby into the existing role of Community and Schools Outreach Coordinator (3 days p/w). Thanks to continuation funding from John Lyon's Charity, we were able to grow our delivery team and add a second Community and Schools Outreach post of 2 days p/w. This role was held by Rebecca Dix until January 2020 and then taken on by Niki Lavithis from February onwards. The benefits of now having a two-person community team were tangible almost immediately. Until Covid-19 sadly necessitated a pause of all face-to-face delivery, we were achieving our aims of growing our library

delivery – adding holiday sessions at an additional Camden library and extending into Brent with a monthly session - and commencing an effective roll-out of the new Coffee Morning programme as well as making progress on our partnership programmes. The team's combined skills have been absolutely vital in imagining and executing our Covid-adapted offer and bringing new and playful ways to present our work.

We started the working year 2019/2020 by reconfirming our mission to give families and communities fun, creative, hands-on, experiences and the opportunity to explore maths in contextual settings that relate to everyday life. We remain committed to our aim that through positive family experiences of maths we can broaden perceptions of what maths is and combat negative attitudes to create a resilient 'can-do' attitude to maths. The focus of our strategic plan this year (outlined on page 12) was systematic delivery to enable us to grow our reach effectively and sustainably.

Covid-19 bought the need for quick thinking and effective adaptation. As a small team, we are proud of our agile, flexible responses and output this year and the lessons learnt will shape our strategy and operations going forward. We will fully review what has worked well in this unexpected period and as we move into the future, we know many new ideas will stay. We continue to adapt and evolve: as we moved into autumn 2020, we refreshed our offer again, starting monthly 'Stay-In Sessions' via Zoom and in partnership with Brent Libraries, to replace our usual 'drop-in' library sessions.

There have of course been challenges and setbacks, but we are confident that when we can resume paused activities, we will do so with added insight. The Activity Pack programme has helped us grow our community networks. We will work with new and established partners to explore the most effective ways of working to ensure we are reaching not only those families that we know will come looking for us – online and for face-to-face family sessions – but also those that would not otherwise find us. Our model of hubs of delivery – with sessions and events

in libraries, communities and schools – will enable families to find us when it suits them best. We look forward to being able to recommence our plans for cascade delivery – creating programmes to train community leaders and charity, community and corporate volunteers to deliver our resources (and the Maths on Toast ethos) in a range of settings, growing our reach even further and again enabling families to find us where it suits them best.



Lucy Davis
CEO

From the Trustees

Firstly, as one of the Founding Trustees of Maths on Toast, I begin by acknowledging the enormous challenges faced by humans around the world during the 2019/20 operational year as the pandemic and other seminal moments in society occurred. The courage and efforts of diverse groups have undoubtedly caused us to reflect on inequalities and recognise the efforts of those whose work is often unnoticed.

For Maths on Toast, a charity that is founded on a mission to address inequities within mathematics education, I am in awe of the way that Lucy and the team stepped up to these challenges. As I reviewed the Annual Report, their commitment to our mission, funders, families and community partners shines through as they found ways to continue to offer our activities – and come up with new ones. By doing so, we have discovered new ways to widen our reach and developed new community relationships through which to achieve this.

At the heart of this was creativity – not any old creativity – but mathematical creativity. Whether it was creating new characters for children to relate to (our Maths Mates), devising exhibitions to encourage active family participation or revisiting our old formats and adapting them to online media, Lucy and the team were unstoppable! On behalf of the Trustees, I thank them for their commitment, whilst of course balancing home and family life with their Maths on Toast roles.

In 2019/20 we expanded the Board of Trustees to reflect the growth and ambition of the charity, which is demanding a broader range of expertise and skill sets. After a healthy recruitment campaign that attracted an extremely talented pool of applicants, we were delighted to welcome Sarah Watzek and Dami Solebo to the Board in June 2020.

Sarah, who works in a senior role in Human Resources at an artificial intelligence research company, brings additional expertise from a decade of earlier work in the charitable sector. Very importantly, Sarah is open about her own struggles with maths anxiety and brings this valuable perspective to the Board. Dami's current role as Business Director at Finding Rhythms requires him to oversee fundraising, programme development and partnerships – three key activities that form part of Maths on Toast's strategic objectives. Furthermore, Dami is passionate about increasing social mobility opportunities through education to create a level playing field for the marginalised and disadvantaged.

On behalf of the board, I offer sincere thanks to Lucy, Nathalie, Susan, Niki, our funders, community partners, supporters and volunteers in what has been the most extraordinary of operational years.

As we move into the 2020/21 operational year, which is likely to present more uncharted territory (and some extreme weather conditions), the Board is confident that we have the best team possible to enable Maths on Toast to not only survive, but also to thrive in our core mission, which is to offer families and communities the best opportunities to have fun whilst doing and learning maths.

Alison Clark-Wilson

Objects and public benefit

The object of Maths on Toast, as per its articles of association, is to advance the education of the public in mathematics, in particular, but not exclusively, through exhibitions, installations and related learning activities.

The Trustees confirm that they have complied with the duty in section 4 of the Charities Act 2011 to have due regard to the public benefit guidance published by the Charity Commission in determining the activities undertaken by the Charity and outlined in this report.

2019/2020 statistics**49,775**

UNIQUE PAGE VIEWS

UP FROM 19,066
IN 2018/2019DIRECT FAMILY
ENGAGEMENTS:**141 FAMILIES**
167 CHILDRENUNIQUE WEBSITE
VISITORS:**12,832**FESTIVAL OF TRIANGLES
KITS PURCHASED:**12**COMMUNITY
MATHS EVENTS: **25**

TWITTER FOLLOWERS:

2433FACEBOOK
FOLLOWERS: **566**

RESOURCE DOWNLOADS:

5,048**5.1K**YOUTUBE
CHANNEL
VIDEO VIEWS

Thanks



JOHN LYON'S
CHARITY



**Sir John Cass's
Foundation**



Charitable
Trust

A note on one of our funders, Sir John Cass's Foundation: in June 2020, in recognition of the fact that some of the wealth gained by Sir John Cass was through slavery and human exploitation, Sir John Cass's Foundation announced that they no longer consider the Sir John Cass name appropriate to represent them and the work they do. They committed to a name change which will be implemented in 2021.

For more details please see: [sirjohncassfoundation.com](https://www.sirjohncassfoundation.com)

The need and theory of change

Our Theory of Change, explains how our creative, community maths activities can support positive experiences of maths – needed because maths anxiety, along with inherited beliefs about maths ability, is prevalent in the UK.

The Need

Maths is a core school subject and numeracy is linked to life chances¹. Our economy and society need mathematically literate people. Yet negative attitudes to maths prevail in the UK, from 'I can't do maths' as an (imitated and inherited) facet of identity to mathematically disabling 'maths anxiety'².

Vision

We want everyone to feel positive about maths – to feel that it is something they can do, and enjoy

Mission

To make maths a creative, enjoyable, human, social activity for families and communities

Model

We run events, develop activity and product ideas and work in partnership to create fun, meaningful and impactful ways of engaging with maths

- Enjoy doing maths together, and be aware it is maths they are enjoying
- Be supportive of others' mathematical learning
- Have positive, shared family memories of mathematics
- Broaden their view of what maths is
- Engage in mathematical activities, showing concentration, play, and perseverance
- Increase their enthusiasm for maths, reduce any fear of it – and do more, afterwards
- Increase their confidence in maths – seeing it as something they can do
- Interact with a broad section of the community and become more aware of the opportunities maths opens up to them

People taking part in our activities will ...

References

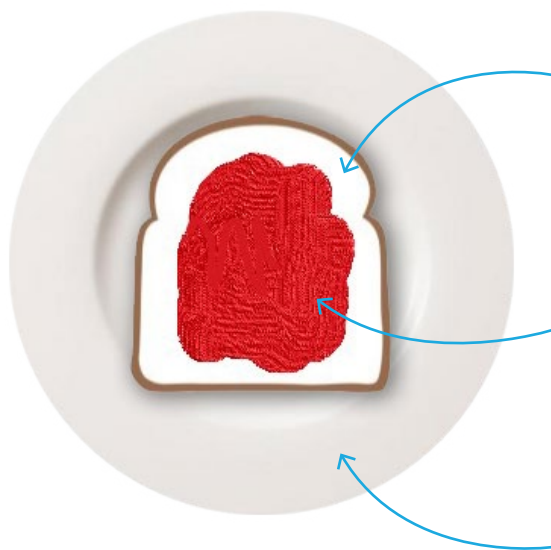
1. Carpentieri, J.D., Litster, J., and Frumkin, L. (2009) Adult Numeracy: A Review of Research. NRDC.
2. National Numeracy (2015) Attitudes towards maths – Research and approach overview. Retrieved from www.nationalnumeracy.org.uk, January 2017.

Embedding the Toast Model

Our Toast Model is a simple, accessible and fun tool to help children and families explore the emotional journey of learning and understand how to develop mathematical resilience.

This year we started to embed the Toast Model across all of our delivery – it can be used to explore and get to grips with feelings towards a particular maths activity, plus it serves as an excellent tool to track changing attitudes towards maths generally across programmes with multiple sessions. Taking inspiration

from Sue Johnston-Wilder’s concept of the Growth Zone Model, (Johnston-Wilder et al, 2015) – which is a framework for understanding different learning experiences and related feelings and has strong links to Growth Mindset (Carol Dweck 2012) - the Toast Model is a playful way to examine, assess and evaluate.



Toast Zone

The maths feels chewy, crunchy, hard but you know you can get your teeth into it. Some buttery support might make it more digestible. You can persevere and learn. Also called the Growth Zone.

Jam Zone

Sweet, this maths feels super easy! But are you learning? This is also called the Comfort Zone. Try to find a harder problem.

Off the edge

Cold, empty, lonely, impossible-feeling. For ways to avoid panic and work your way back to the toast visit our website.

Section 2: A year of two halves

Planned Strategy 2019/2020

Maths on Toast is still young but is now a well-established charity. At this stage in our journey, it was time to reflect on what we do well. Our strategy planned to consolidate our activities; maximise our impact by ensuring we exploited all of our resources, programmes and products fully; and utilise these resources and our time as efficiently and effectively as possible.

The focus of our strategic plan for 2019/2020 was to roll out systematic programmes that could be scaled and adapted as necessary. This plan sought to enable sustainable growth that remains flexible and responsive to the needs of the families, communities and partners we work with.

Key aims of our operational plan for the year were to:

- Expand our library offer within Camden and into one other funded borough
- Grow our network of community partners and explore suitable delivery avenues
- Roll out our parental engagement Coffee Morning programme and continue to pilot the Number Party initiative in schools
- Finalise the Maths on Toast Number

Partners programme of training and resources with Tower Hamlets Education Business Partnership and their corporate volunteers, and trial wider roll out

- Explore community cascade training models
- Develop simple ways for corporates to support our work by offering a range of set funding 'packages' that corporates can purchase

Covid-19 adaptations and impact

With the announcement of the first lockdown in March 2020, we had to quickly assess what we could and couldn't do and adapt our plans rapidly. Our immediate response was to grow our online offer – creating a regular programme of online content, which involved reviewing, editing and adapting our activities to maximise their accessibility and ease of use at home (see page 18).

As it became clear that this was no short-term pause, we continued to both expand and update, discovering new opportunities along the way. Our 'virtual gallery' (page 16) proved to be an effective engagement opportunity and we will replicate and build on the concept in the coming year - to inspire people to take part and share activities both online and in their own communities.

Whilst our online presence has provided the opportunity for families across the UK to access our activities and resources, we were very mindful of the digital gap and the fact that many children may have few material resources at home, making it difficult to do our signature creative, crafty activities, even if they could access them online. Our answer was to develop a Maths on Toast Activity Pack. Delivery commenced in Camden, Brent and Tower Hamlets in the summer months and for the new reporting year 20/21, we have been successful in gaining new funding from John Lyon's Charity to roll the programme out to more families across 9 London boroughs: Barnet, Brent, Camden, Ealing, Hammersmith & Fulham, Harrow, Kensington & Chelsea and the Cities of London and Westminster.

The impact that Covid-19 has had on our work has been obvious – we were unable to return to delivering any face-to-face sessions during this reporting year and various programmes, development and further pilots had to be put on hold. Working with our partners, we remain committed to re-activating this work as soon as all partners are able and it is viable and safe to do so.

September 2019 - February 2020

Creative maths in the community

Family maths drop-in sessions

This year we have broadened the reach of our family maths drop-in sessions. We continued our work in Camden, beginning our 5th residency at Pancras Square Library in September. In the October half term break we held our first session at Queens Crescent Library followed by further sessions during November and February's half term breaks. In January, we expanded into Brent.

In addition to the Camden library venues, we began a series of after-school family workshops at Castlehaven Community Association. These sessions - planned to run monthly and open to all of the families who regularly attend the centre, along with any other families who live locally - provide another way to engage with new audiences.

In January we expanded to neighbouring borough Brent, with regular monthly creative maths sessions at Ealing Road Library. From the start of our partnership with the borough, our events have featured in its fortnightly newsletter, reaching over 17,500 subscribers.



11 LIBRARY EVENTS

"I really liked this because I got to experience different things"

Child Feedback



Maths on Toast Coffee Morning

Following last year's successful pilot programme, we began running our 'Coffee Morning' programme in primary schools in Tower Hamlets and Camden.



Our Coffee Morning programme comprises 4 – 6 weekly sessions allowing parents and children the opportunity to have fun exploring creative maths together in a familiar setting.

The programme is tailored to each school. In some settings, children and parents learn together each week. In others, the programme begins with parents' confidence with maths, with their children joining for the later sessions. Schools can use this programme to increase parental engagement and offer additional support to families that they identify will benefit from this type of practical, hands-on intervention.

Due to Covid-19 school closures, several schools were unable to complete or start their booked programme. All sessions will be rescheduled to resume in person when feasible and we are also exploring the possibility of virtual/online alternatives via Zoom/Teams with the schools involved.

“This has been so useful, now I understand some of the things I can use at home.”

Parent Feedback

8
SESSIONS IN
TOWER HAMLETS

5
SESSIONS IN CAMDEN

Attendance across Tower Hamlets and Camden schools:

Old Palace Primary School

Bangabandhu Primary School

Our Lady's Catholic Primary School

Parents: 73

Children: 65



Rangoli Maths Project

The start of the new school year in September was the ideal time to launch our new community participatory event – the Rangoli Maths Project.

Families attending our library drop-in sessions were invited to create their own rangoli designs, which would become part of a community celebration exhibition at Pancras Square Library in June. After libraries were closed during the Spring lockdown, the Rangoli Maths Project was moved online. Families created their rangolis at home, and sent in pictures via email or through social media to be added to a virtual gallery on our website. Whilst prompted by the Covid-19 crisis, moving the project online greatly enhanced this project by increasing its reach and enabling families from all over the UK to participate.

A rangoli is a colourful design made on the floor using coloured rice powder. In maths, rangoli patterns are a creative way to discover symmetry, reflection and tessellation.



**OVER 50
SUBMISSIONS
TO THE
GALLERY!**



Festival of Triangles

Festival of Triangles, our whole-school maths event, continued to be booked by primary schools. By bringing together children, teachers and parents in a shared aim – to build a giant Sierpinski tetrahedron - Festival of Triangles is a wonderfully practical and creative way to encourage parental engagement and celebrate maths. Following a week of classroom-based activities, parents and carers are invited to the finale event to join in with the construction of the Sierpinski tetrahedron and take part in a range of related activities.

In November, in a change to its usual primary school setting, the adult education college Learning & Enterprise College Bexley held a Festival of Triangles. Adult learners across the college got involved, and those with children took materials home to make triangles and tetrahedrons with their children. The week was organised to coincide with the inaugural Maths Week England.



Feedback form

Draw or write your favourite memory of Festival of Triangles

What would have made Festival of Triangles better?

nothing!

Our supplementary Festival of Triangles professional development training workshop for teachers enables groups of schools to work with their peers and think creatively about maths and parental engagement. This offers a scalable model that can enable the Festival of Triangles to reach more families.

“I loved the opportunity to collaborate and plan with colleagues from other schools.”

Teacher Feedback

“The parents still mention the festival in a very positive way which helps make the school more of a community”

Teacher Feedback

March – August 2020

Creative maths online and in print: Maths on Toast's response to Covid-19

Maths on Toast moves online and adapts its outreach

During the Covid-19 spring lockdown as libraries across the UK closed, our face-to-face family maths drop-in sessions in Camden and Brent were cancelled. When Covid-19 school closures were officially announced, we gained an increase in social media followers and a spike in website traffic as parents, carers and teachers sought online resources to support learning at home.

Throughout the Covid-19 lockdown period, we supported families and schools by encouraging teachers to download our printable pdfs to use in take-home packs for pupils, and promoting our accessible, open-ended resources to parents and carers who found themselves supporting learning at home.

With more time spent indoors, we knew families would be looking for activities online to pass the time - our aim was to ensure our online offer was as accessible as possible. We fulfilled this aim by checking new activities did not require a long list of additional resources; we adapted and edited existing activities, adding in alternatives to printing, encouraging creative use of materials you'd find at home and offering suggestions of how to make your own resources.

A series of blog posts by our staff and trustee team were aimed at supporting parents and carers to feel relaxed and confident about doing maths with their children – something that research consistently shows is difficult for many

parents. These blogs explained the Maths on Toast ethos and the reasoning behind it, answered how and why our approach works, and offered tips and advice to help parents and carers to not only understand our approach, but also put it into action.

**MARCH 2020 UNIQUE
PAGE VIEWS 7036**

**(COMPARED WITH
1287 IN MARCH 2019)**

POST

**Covid-19 – Supporting
parents & carers with
hands-on, creative
maths learning at
home**

19 March 2020

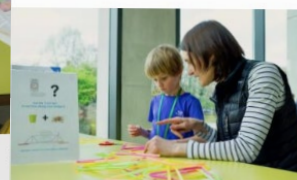


[View Post](#)

POST

**A longer read...
Supporting your
child's mathematics
during lockdown (and
beyond)**

9 July 2020



[View Post](#)

>

Monday Maths Fun Day

Our first creative response to Covid-19 was Monday Maths Fun Day; a weekly programme of creative maths activities for families to try together at home. New activities were uploaded to the website weekly, each with a different mathematical theme.

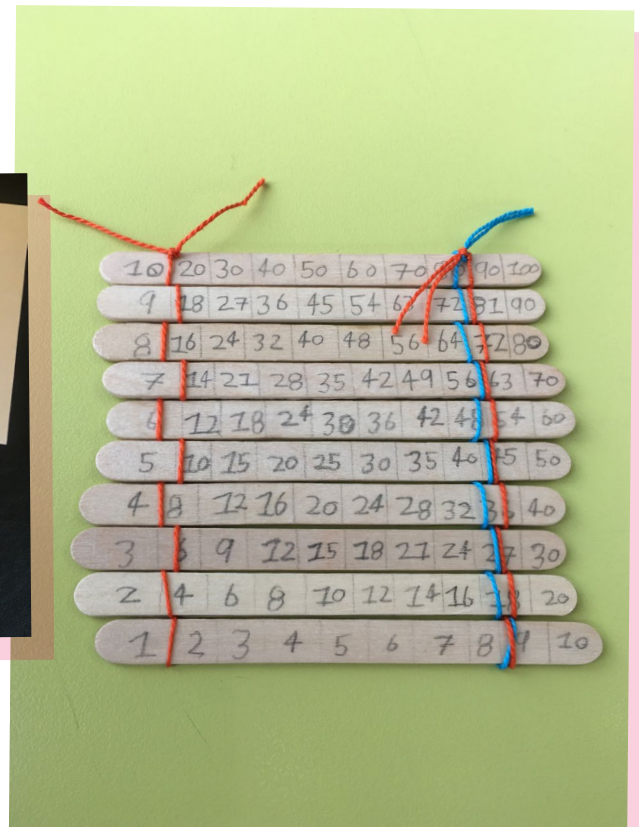
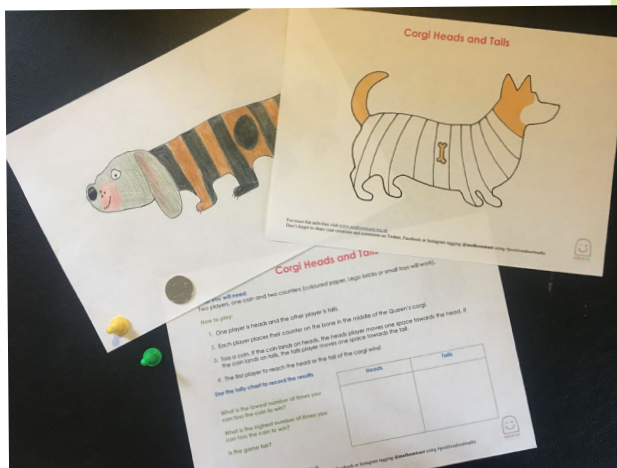
Our Monday Maths Fun Day programme ran for 17 successive weeks.



MONDAY MATHS FUN DAY UNIQUE PAGE VIEWS:

1ST MARCH -
31ST AUGUST 2020:

2555



Summer Saturdays with the Maths Mates

This year, we devised a nautical-themed 7-week programme called Summer Saturdays with the Maths Mates. The programme comprised eight resources (one per week, plus a bonus activity) released every Saturday throughout the summer holiday. In a typical summer, we would have linked our July and August library sessions to the Summer Reading Challenge. In a nod to the Summer Reading Challenge's 'Silly Squad' theme, our programme introduced our set of characters, the 'Maths Mates'.

SUMMER SATURDAY
WITH THE MATHS
MATES UNIQUE PAGE
VIEWS:

1ST JULY - 31ST AUGUST:

733



Summer Saturdays
with
the Maths Mates



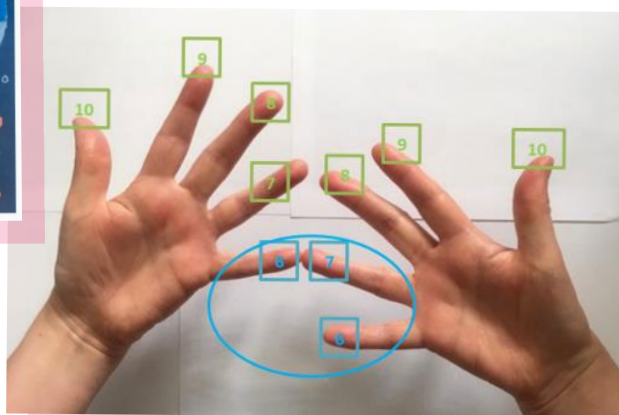
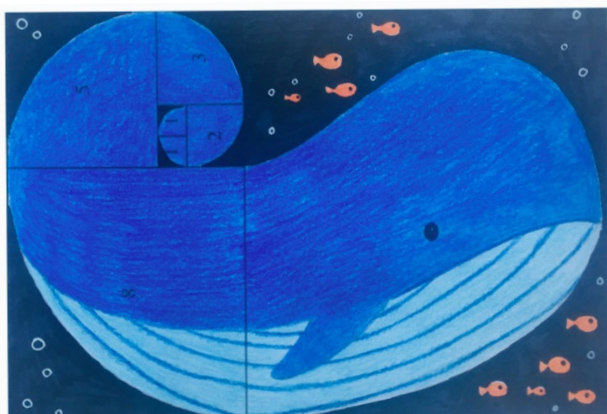
MOST POPULAR
ACTIVITY:

**MAKE A
PAPER BOAT**

Increasing our online resource library

Alongside our Monday Maths Fun Day and Summer Saturdays with the Maths Mates programmes, we developed extra content for families wanting seasonal craft activities with a maths twist, or those looking for maths games and ideas with a particular mathematical theme. We continued to explore the links with maths and the world around us, maths and art, maths and other hobbies and interests. New challenges and tasks that were developed included ways to celebrate Easter, Garden Wildlife Week and the Queen's birthday, new tricks and techniques with times tables as well as getting involved with Children's Art Week.

We experimented with more short-form digital content, producing a range of short, simple videos to accompany particular activities. Some offer an alternative to following the activity sheet, others add a story or an extra layer of creative inspiration to the activity – all are available on our YouTube channel or via a link with the related activity.



Printed Activity Packs

Together with our online resources, we adapted the way we work to ensure we continued to find, reach and support families that may have poor digital access and/or may have limited access to additional resources at home. Access to wider learning experiences is an integral part of a child's development and broader educational needs. We designed our Maths on Toast Activity Pack to provide everything needed for creative family learning opportunities in the home.

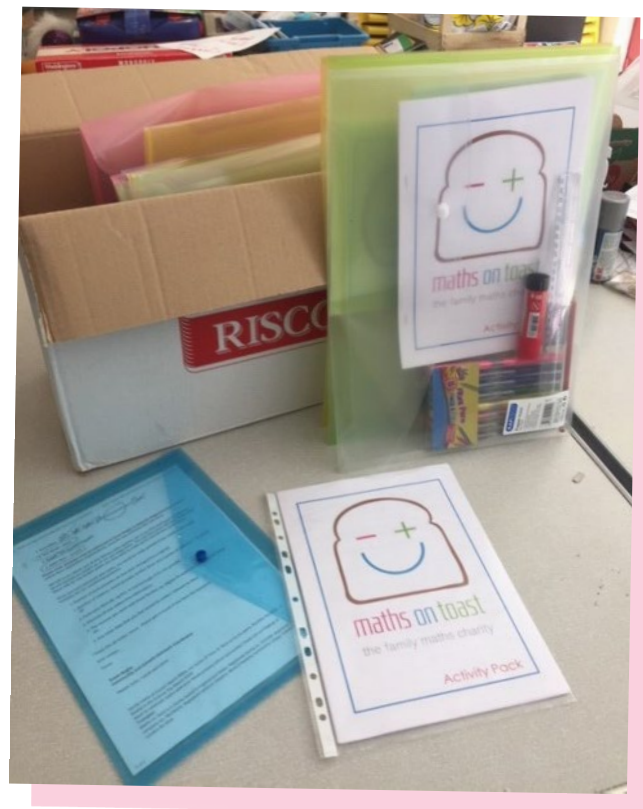
To ensure packs would reach the families most in need of this type of resource, we worked with established partners and developed new contacts with community and voluntary organisations across Camden, Brent, Islington and Lambeth for distribution to the families they work with.

Activity Pack contents:

- A printed selection of our creative maths activities
- An intro to the Maths on Toast approach and top tips
- Felt tips
- Glue
- Scissors
- Paper and card
- Pencils, rubber and ruler



**OVER 200 FAMILIES
REACHED BETWEEN
MAY AND AUGUST 2020**



Growing our reach & engagement

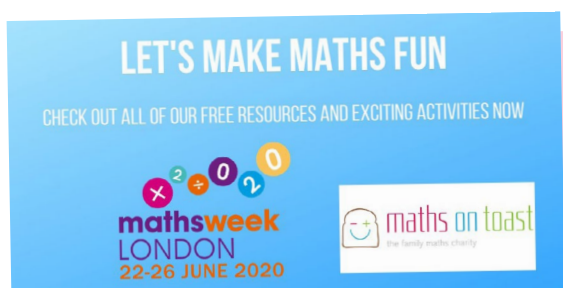
In addition to our usual programmes, online engagement across the UK and Covid-related targeted outreach with the Activity Pack programme, the following partnerships and initiatives helped us reach as wide an audience as possible:

Maths Week London

In June, our online resources were part of Maths Week London, an annual event now in its second year. As an inaugural partner, we helped shape this year's key aims of improving children's confidence in, and promoting a positive attitude towards, maths and highlighting its value as a lifelong skill.

Due to school closures, this year's Maths Week London was largely online, and our downloadable resources formed part of the event's virtual offer. Over 800 schools registered to take part, along with 2,500 individuals.

**819 SCHOOLS AND
2500 INDIVIDUALS
REGISTERED TO
TAKE PART**



Maths Month North Yorkshire Coast

For the second year running, we delivered professional development teacher training in preparation for the North Yorkshire Coast Opportunity Area (NYCOA) Maths Month. In early February, we ran our bespoke workshop to 8 teachers giving them additional resources and training to run a Festival of Triangles in their setting.

NYCOA Maths Month takes place in March with free events and activities online, in schools and in the community across Whitby, Scarborough and Filey. This annual event aims to encourage people to engage with maths and numeracy and promote the idea that maths is for everyone.

It is funded by the Department for Education and coordinated by North Yorkshire Business Education Partnership.

This year's NYCOA Maths Month was impacted by the impending and subsequent Covid -19 school closures and lockdown in March.



Number Day 2020

Once again, we were delighted to support Number Day, the NSPCC's maths-inspired annual fundraising day which saw 4,544 schools across the UK register to take part. This year, we added a Fibonacci-themed activity to our collection of fun creative maths resources, for teachers to download and use in the classroom.

Total number of downloads of Maths on Toast resources 5,048



How To Half Term Challenge

We have continued to adopt innovative ways to utilise our existing resources. Using our Maths on Toast Bites programme of 'How To' maths films, we devised the 'How To Half Term Challenge', encouraging families to watch a different Bites film each day and then try the activity together over the February half-term break. The challenge was promoted to schools through social media as a fun, low-cost and weather-proof educational half-term activity.



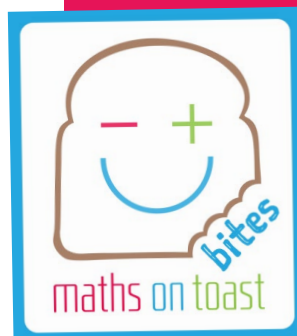
**NUMBER OF SCHOOLS
REGISTERED TO TAKE
PART IN NUMBER
DAY 2020:**

4,544

**TOTAL MATHS ON
TOAST BITES HOW
TO VIDEOS VIEWS IN
2019-2020:**

2,754

1 SEP 19 - 31 AUG 20



Positive About Maths Film & Festive Fundraiser Campaign

In December, to accompany our festive fundraising campaign, we released our Positive About Maths short film, created earlier in the year in partnership with Media Trust as part of its Volunteer Films programme, funded by John Lyon's Charity.

The professional film, available to watch via the 'About Us' page of our website and our YouTube channel, shows how our work with families can help counter the commonplace anxieties and negative attitudes both adults and children can have towards maths.

Produced by



Supported by



JOHN LYON'S
CHARITY



Number Rumbler

Our family card game Number Rumbler got a makeover! After selling out of the original stock from 2016, we took the opportunity to update its packaging design.

The idea behind the new box design is to create more brand awareness and increase visibility of Maths on Toast's logo. The game itself has not changed, and it remains an innovative, creative and fun way for families to support maths learning and encourage children to develop 'number sense'.

Number Rumbler continued to be a popular go-to for families looking for open-ended creative ways to explore numbers.

“Your Number Rumbler game has been a big hit...Thank you for these fabulous cards and for the great work you do”

Julia, Private Tutor



Section 3: Our Team

Trustees

For biographies of our trustees and staff team visit our website



Dr Alison Clark-Wilson



Gemma Mann



Krystle McGilvery



Reena O'Neill



Sophie Smith Sachdeva



Dami Solebo
(from June 2020)



Sarah Watzek
(from June 2020)

Structure, governance and management

Maths on Toast is a company limited by guarantee, number 08196529, and a registered charity in England and Wales, number 1151486.

The organisation's Governing Document is its Articles of Association, incorporated 30 August 2012.

Day-to-day management of Maths on Toast is delegated by the Trustees to the Chief Executive Officer, Lucy Davis, who reports to the Board of Trustees at regular meetings, held once every 6 weeks throughout this reporting period.

Selection and appointment of Trustees

The Trustees may appoint new members by general agreement, in particular where

specialist skills are required. There must be no less than three trustees and no more than eight.

New members are fully briefed on their obligations under charity and company law, and are given information on the decision-making processes, the financial performance of the Charity and the business plan.

Risk management

The Trustees have considered the major risks to which the Charity is exposed and established procedures to manage those risks. They have implemented reviews and procedures to mitigate those risks, including a review of risks and liabilities at two Board meetings a year.

Staff



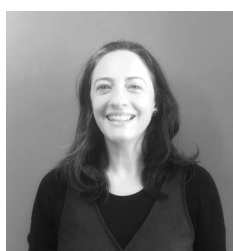
Lucy Davis
CEO



Nathalie Meghriche
General Manager



Susan Bugby
Community & Schools
Outreach Manager



Niki Lavithis
Community & Schools Outreach
Manager (from February 2020)



Rebecca Dix
Community & Schools Outreach
Manager (until January 2020)

Founder and Patron



Alexandra Fitzsimmons

Volunteers

Thanks to all of our volunteers for contributing their time, energy and creativity. Thanks to UCL Volunteering Services, Reach Volunteering and STEMNet for supporting us in recruiting volunteers.

Accountants

Andy Nash Accounting &
Consultancy Ltd

Section 4: Trustees' Report and Accounts

Year ended 31 August 2020

Financial Review

During the current financial year the Charity achieved a surplus of £22,083 (2019: surplus of £10,846) increasing total reserves at year end to £79,645 (2019: £57,562).

Of the reserves held at year end, £63,195 (2019: £55,094) related to unrestricted funds and £16,450 (2019: £2,468) related to restricted funds.

Reserves Policy

The Trustees have considered Charity Commission guidance on reserves. The Maths on Toast Reserves Policy is set to maintain a sufficient level of reserves to enable normal operating activities. The reserves level has been set to ensure that the Charity is able to continue over a period of at least 6 months should a shortfall in income occur. It also takes account of potential risks and contingencies that may arise from time to time.

Therefore, the Trustees have set a minimum reserves level of £35,000 at the end of the financial year 2019-2020. The year-end unrestricted reserve of £63,195 safely exceeds this minimum level.

Statement of Board of Trustees' Responsibilities

The trustees are responsible for preparing the Trustees' Annual Report and the financial statements in accordance with applicable law and regulations. Company law requires the trustees to prepare

financial statements for each financial year. Under that law they are required to prepare the financial statements in accordance with UK Accounting Standards and applicable law (UK Generally Accepted Accounting Practice), including FRS 102 The Financial Reporting Standard applicable in the UK and Republic of Ireland.

Under company law the trustees must not approve the financial statements unless they are satisfied that they give a true and fair view of the state of affairs of the charitable company and of the excess of income over expenditure for that period. In preparing these financial statements, the trustees are required to:

- select suitable accounting policies and then apply them consistently;
- observe the methods and principles in the Charities SORP;
- make judgements and estimates that are reasonable and prudent;
- state whether applicable UK Accounting Standards have been followed, subject to any material departures disclosed and explained in the financial statements, and;
- prepare the financial statements on the going concern basis unless it is inappropriate to presume that the charitable company will continue its activities.

The trustees are responsible for keeping adequate accounting records that are sufficient to show and explain the charitable company's transactions and disclose with reasonable accuracy at any time the financial position of the charitable company and enable them to ensure that the financial statements comply with the Companies Act 2006. They have general responsibility for taking such steps as are reasonably open to them to safeguard the assets of the charitable company and to prevent and detect fraud and other irregularities.

The trustees are responsible for the maintenance and integrity of the corporate and financial information included on the charitable company's website. Legislation in the UK governing the preparation and dissemination of financial statements may differ from legislation in other jurisdictions. In addition, the trustees confirm that they are happy that content of the annual review in pages 1-29 of this document meet the requirements of both the Trustees' Annual Report under charity law and the Directors' Report under company law.

They also confirm that the financial statements have been prepared in accordance with the accounting policies set out in the notes to the accounts and comply with the charity's governing document, the Charities Act 2011 and Accounting and Reporting by Charities: Statement of Recommended Practice applicable to charities preparing their accounts in accordance with FRS 102, The Financial Reporting Standard applicable in the UK and Republic of Ireland second edition (effective 1 January 2019).

Preparation of the report

This report has been prepared taking advantage of the small companies exemption of section 415A of the Companies Act 2006.

This report was approved and authorised for issue by the Board of Trustees on 19th April 2021 and signed on its behalf by:

Krystle Mcgilvery
Treasurer, Board of Trustees

Independent Examiner's Report to the Members of Maths on Toast

I report to the Trustees on my examination of the accounts of Maths on Toast (charity number 1151486, company number 08196529) for the year ended 31 August 2020 which are set out on pages 32-39.

Respective responsibilities of trustees and examiner

The Trustees (who are also the directors of the company for the purposes of company law) are responsible for the preparation of the accounts in accordance with the requirements of the Companies Act 2006 ('the 2006 Act'). The Trustees consider that an audit is not required for this year under section 144(2) of the Charities Act 2011 ('the 2011 Act') nor under Part 16 of the 2006 Act, and that an independent examination is needed.

Having satisfied myself that the accounts of the Company are not required to be audited under Part 16 of the 2006 Act and are eligible for independent examination, it is my responsibility to:

- examine the accounts under section 145 of the 2011 Act;
- to follow the procedures laid down in the general directions given by the Charity Commission under section 145(5)(b) of the Charities Act; and,
- to state whether particular matters have come to my attention.

This report, including my statement, has been prepared for and only for the Charity's Trustees as a body. My work has been undertaken so that I might state to the Charity's Trustees those matters I am required to state to them in an independent examiner's report and for no other purpose. To the fullest extent permitted by law, I do not accept or assume responsibility to anyone other than the Charity and the Charity's Trustees as a body for my examination work, for this report, or for the statements I have made.

Basis of independent examiner's statement

My examination was carried out in accordance with general directions given by the Charity Commission. An examination includes a review of the accounting records kept by the Charity and a comparison of the accounts presented with those records. It also includes consideration of any unusual items or disclosures in the accounts and seeking explanations from the Trustees concerning any such matters.

The procedures undertaken do not provide all the evidence that would be required in an audit, and consequently no opinion is given as to whether the accounts present a 'true and fair' view and the report is limited to those matters set out in the statement below.

Independent examiner's statement

I have completed my examination. I confirm that no material matters have come to my attention in connection with the examination giving me cause to believe that in any material respect:

- accounting records were not kept in respect of the Company as required by section 386 of the 2006 Act; or,
- the accounts do not accord with those records; or,
- the accounts do not comply with the accounting requirements of section 396 of the 2006 Act other than any requirement that the accounts give a 'true and fair view which is not a matter considered as part of an independent examination; or,
- the accounts have not been prepared in accordance with the methods and principles of the Statement of Recommended Practice for accounting and reporting by charities applicable to charities preparing their accounts in accordance with the Financial Reporting Standard applicable in the UK and Republic of Ireland (FRS 102).

I have no concerns and have come across no other matters in connection with the examination to which attention should be drawn in this report in order to enable a proper understanding of the accounts to be reached.

Shaun Brownsmith FCA

For and on behalf of Haines Watts
Chartered Accountants

4 Claridge Court
Lower Kings Road
Berkhamsted
Hertfordshire, HP4 2AF

Date: 6th May 2021

Statement of Financial Activities

Incorporating the Income & Expenditure Account and the Statement of Recognised Gains & Losses
For the year ended 31 August 2020

	Notes	Unrestricted Funds 2020	Restricted Funds 2020	Total Funds 2020	Total Funds 2019
Income from:					
Donations and legacies	2	49,398	44,340	93,738	67,775
Charitable activities	3	5,778	-	5,778	10,336
Total income		55,176	44,340	99,516	78,111
Expenditure on:					
Raising funds	4 & 5	14,543	-	14,543	11,900
Charitable activities -					
Community Maths	4 & 6	19,255	18,446	37,701	29,789
Partnerships and collaborations	4 & 6	13,277	11,912	25,189	25,576
Total expenditure		47,075	30,358	77,433	67,265
Net income/(expenditure)		8,101	13,982	22,083	10,846
Reconciliation of funds:					
Balance brought forward	11 & 12	55,094	2,468	57,562	46,716
Balance carried forward	11 & 12	63,195	16,450	79,645	57,562

Balance Sheet

As at 31 August 2020

	Notes	Total Funds 2020	Total Funds 2019
Current assets			
Stocks	8	9,603	229
Debtors	9	573	1,549
Cash at bank and in hand		103,134	87,601
Total current assets		113,310	89,379
Creditors - amounts falling due within one year	10	(33,665)	(31,817)
Net current assets		79,645	57,562
Net assets		79,645	57,562
Funds of the charity:			
Restricted funds	11 & 12	16,450	2,468
Unrestricted funds			
General funds	11 & 12	63,195	55,094
		63,195	55,094
		79,645	57,562

The financial statements have been prepared in accordance with section 415A of the Companies Act 2006 relating to small companies and FRS 102 Section 1A.

The charitable company is entitled to exemption from audit under section 477 of the Companies Act 2006 for the year ended 31 August 2020, and the members have not required the charitable company to obtain an audit of its financial statements for the year ended 31 August 2020 under section 476 of the Companies Act 2006.

The directors acknowledge their responsibilities for complying with the requirements of the Act with respect to accounting records and the preparation of the accounts.

They were approved and authorised for issue by the Board of Trustees on 19th April 2021 and signed on their behalf by:

Krystle McGilvery

Treasurer, Board of Trustees

Notes to the financial statements

1. Accounting policies

Basis of preparation of the financial statements

The financial statements have been prepared in accordance with 'Charities SORP (FRS 102) - Accounting and Reporting by Charities: Statement of Recommended Practice applicable to charities preparing their accounts in accordance with the Financial Reporting Standard applicable in the UK and Republic of Ireland (FRS 102) second edition (effective 1 January 2019)', the Financial Reporting Standard applicable in the UK and Republic of Ireland (FRS 102) and the Companies Act 2006.

The effect of any event relating to the period ended 31 August 2020, which occurred before the date of approval of the financial statements by the Board of Trustees has been included in the financial statements to the extent required to show a true and fair view of the state of affairs at 31 August 2020 and the results for the year ended on that date.

Under the exemption available to smaller charities the Board of Trustees has chosen not to include a Statement of Cash Flows within the financial statements.

The functional currency of the charity is sterling. The amounts in the financial statements are rounded to the nearest pound.

Going concern

The financial statements have been prepared on the going concern basis as the Board of Trustees is confident that future reserves and future income are more than sufficient to meet current commitments. There are no material uncertainties that impact this assessment, and the ongoing COVID-19 pandemic has had no material impact on this assessment.

Legal status

Maths on Toast is a charitable company limited by guarantee registered in England & Wales, and meets the definition of a public benefit entity under FRS 102. In the event of the Charity being wound up, the liability in respect of the guarantee is limited to £1 per member of the charity. The registered address is NCCSpace, Block D Hackney Community College, Falkirk St, London N1 6HQ.

Fund Accounting

General funds are unrestricted funds which are available for use at the discretion of the Trustees in furtherance of the general objectives of the Charity and which have not been designated for other purposes.

Restricted funds are funds that are to be used in accordance with specific restrictions imposed by donors or that have been raised by the Charity for particular purposes. The cost of raising and administering such funds are charged against the specific fund. The aim and use of each restricted fund is set out in note 11 of the financial statements.

Income

Income is recognised when the charity has entitlement to the funds, any performance indicators attached to the item(s) of income have been met, it is probable that the income will be received, and the amount can be measured reliably.

Donations are recognised in full in the Statement of Financial Activities when entitled, receipt is probable and when the amount can be quantified with reasonable accuracy. Gift aid receivable is included when claimable.

Grant income is credited to the Statement of Financial Activities when received or receivable whichever is earlier, unless the grant relates to a future period, in which case it is deferred.

Income from charitable activities is credited to the Statement of Financial Activities when received or receivable whichever is earlier, unless it relates to a specific future period or event, in which case it is deferred.

Expenditure and irrecoverable VAT

All expenditure is accounted for on an accruals basis and has been included under expense categories that aggregate all costs for allocation to activities.

Indirect costs, including governance costs, which cannot be directly attributed to activities, are allocated proportionate to total direct costs allocated to each project area, as outlined in note 4 of the financial statements.

During the current year the cost allocation model has been reviewed and the prior year figures have been restated to account of this change.

Irrecoverable VAT is charged against the category of expenditure for which it was incurred.

Cash at bank and in hand

Cash at bank and in hand includes cash in hand, deposits with banks and funds that are readily convertible into cash at, or close to, their carrying values, but are not held for investment purposes.

Stock

Stock is valued at the lower of cost and net realisable value, after making due allowance for obsolete and slow moving items.

Debtors and prepayments

Trade and other debtors are recognised at the settlement amount after any trade discount is applied. Prepayments are valued at the amount prepaid net of any trade discounts due.

Creditors

Creditors are recognised where the charity has a present obligation resulting from a past event that will probably result in the transfer of funds to a third party, and the amount due to settle the obligation can be measured or estimated reliably.

Pensions

The charity operates a defined contribution pension schemes which is administered by an external independent pension provider. Contributions are recognised in the Statement of Financial Activities as they fall due, however during the current and previous financial years all eligible employees chose to opt out of the scheme.

Critical estimates and judgements

In preparing financial statements it is necessary to make certain judgements, estimates and assumptions that affect the amounts recognised in the financial statements. These assumptions are reassessed annually as part of the accounts preparation process.

In the view of the Trustees in applying the accounting policies adopted, no judgements were required that have a significant effect on the amounts recognised in the financial statements nor do any estimates or assumptions made carry a significant risk of material adjustment in the next financial year.

Financial instruments

Basic financial instruments are measured at amortised cost other than investments which are measured at fair value.

2. Income from donations and legacies

	Unrestricted Funds 2020	Restricted Funds 2020	Total Funds 2020	Unrestricted Funds 2019	Restricted Funds 2019	Total Funds 2019
Advocates	-	-	-	-	6,670	6,670
John Lyon's Charity	-	15,000	15,000	-	8,667	8,667
Man Charitable Trust	49,035	-	49,035	36,840	7,373	44,213
Sir John Cass's Foundation	-	29,340	29,340	-	7,310	7,310
Grants	49,035	44,340	93,375	36,840	30,020	66,860
Other donations and income	363	-	363	915	-	915
	49,398	44,340	93,738	37,755	30,020	67,775

3. Income from charitable activities

	Unrestricted Funds 2020	Restricted Funds 2020	Total Funds 2020	Unrestricted Funds 2019	Restricted Funds 2019	Total Funds 2019
Consultancy services	3,584	-	3,584	1,400	-	1,400
Sale of educational resources	2,194	-	2,194	8,538	-	8,538
Event delivery	-	-	-	398	-	398
	5,778	-	5,778	10,336	-	10,336

4. Total expenditure

	Direct staff costs 2020	Direct other costs 2020	Indirect staff costs 2020	Indirect other costs 2020	Total Funds 2020	Direct staff costs 2019	Direct other costs 2019	Indirect staff costs 2019	Indirect other costs 2019	Total Funds 2019
Raising funds	9,377	553	1,966	2,647	14,543	7,852	20	1,619	2,409	11,900
Charitable activities										
Community Maths	21,936	3,807	5,097	6,861	37,701	15,575	4,130	4,053	6,031	29,789
Partnerships & collaborations	17,200	-	3,405	4,584	25,189	12,213	4,705	3,479	5,179	25,576
Charitable activities	39,136	3,807	8,502	11,445	62,890	27,788	8,835	7,532	11,210	55,365
	48,513	4,360	10,468	14,092	77,433	35,640	8,855	9,151	13,619	67,265

Indirect costs have been allocated based on the proportion of direct costs attributable to each activity.

An analysis of staff costs can be found in note 7.

An analysis of raising funds split between restricted and unrestricted funds can be found in note 5.

An analysis of charitable activities split between restricted and unrestricted funds can be found in note 6

Indirect costs consists of the following:

	Total Funds 2020	Total Funds 2019
Indirect salaries	10,468	9,151
Other staff costs	351	895
Premises	8,802	8,424
Administration	3,094	2,455
Governance	1,845	1,845
	24,560	22,770

Governance costs includes the following expenses:

	Total Funds 2020	<i>Total Funds 2019</i>
Independent examination	765	765
Accounts preparation	1,080	1,080
	<u>1,845</u>	<u>1,845</u>

5. Expenditure on raising funds

	Unrestricted Funds 2020	Restricted Funds 2020	Total Funds 2020	<i>Unrestricted Funds 2019</i>	<i>Restricted Funds 2019</i>	<i>Total Funds 2019</i>
Direct costs	9,930	-	9,930	5,081	2,791	7,872
Indirect costs	4,613	-	4,613	3,132	896	4,028
	<u>14,543</u>	<u>-</u>	<u>14,543</u>	<u>8,213</u>	<u>3,687</u>	<u>11,900</u>

6. Expenditure on charitable activities

	Unrestricted Funds 2020	Restricted Funds 2020	Total Funds 2020	<i>Unrestricted Funds 2019</i>	<i>Restricted Funds 2019</i>	<i>Total Funds 2019</i>
Community Maths						
Direct costs	7,297	18,446	25,743	3,427	16,278	19,705
Indirect costs	11,958	-	11,958	6,692	3,392	10,084
	<u>19,255</u>	<u>18,446</u>	<u>37,701</u>	<u>10,119</u>	<u>19,670</u>	<u>29,789</u>
Partnerships & collaborations						
Direct costs	5,288	11,912	17,200	7,934	8,984	16,918
Indirect costs	7,989	-	7,989	6,940	1,718	8,658
	<u>13,277</u>	<u>11,912</u>	<u>25,189</u>	<u>14,874</u>	<u>10,702</u>	<u>25,576</u>
	<u>32,532</u>	<u>30,358</u>	<u>62,890</u>	<u>24,993</u>	<u>30,372</u>	<u>55,365</u>

7. Staff costs

	Total Funds 2020	<i>Total Funds 2019</i>
Gross salaries	58,033	50,286
Employer's pension	947	618
HMRC SMP reimbursement	-	(6,114)
	58,980	44,790

The average headcount during the year was 4 (2019: 4).

No employee received employee benefits of more than £60,000 (2019: Nil).

The total employee benefits paid to key management personnel during the year was £19,055 (2019: £15,557).

8. Stock

	Total Funds 2020	<i>Total Funds 2019</i>
Number Rumbler	9,603	229
	9,603	229

9. Debtors

	Total Funds 2020	<i>Total Funds 2019</i>
Staff floats	500	300
Reimbursement due from HMRC	73	1,249
	573	1,549

10. Creditors – amounts falling due within one year

	Total Funds 2020	<i>Total Funds 2019</i>
Accounts payable	865	391
Accruals	1,845	1,845
Pensions payable	196	124
Deferred grant revenue	30,563	29,298
Credit card	196	159
	33,665	31,817

11. Analysis of charity funds

	Balance brought forward 2020	Income received in year 2020	Expenditure incurred in year 2020	Transfer between funds 2020	Balance carried forward 2020
Unrestricted funds					
General funds	55,094	55,176	(47,075)	-	63,195
Total unrestricted funds	55,094	55,176	(47,075)	-	63,195
Restricted funds					
John Lyon's Charity	-	15,000	(12,277)	-	2,723
Sir John Cass's Foundation	2,468	29,340	(18,081)	-	13,727
Total restricted funds	2,468	44,340	(30,358)	-	16,450
Total funds	57,562	99,516	(77,433)	-	79,645

Restricted funds – John Lyon's Charity

This was a three-year grant supporting educational workshops and events in the London Borough of Camden.

Restricted funds – Sir John Cass's Foundation

This is a two-year grant supporting educational workshops and London Borough of Camden.

	Balance brought forward 2019	Income received in year 2019	Expenditure incurred in year 2019	Transfer between funds 2019	Balance carried forward 2019
Unrestricted funds					
General funds	40,209	48,091	(33,206)	-	55,094
Total unrestricted funds	40,209	48,091	(33,206)	-	55,094
Restricted funds					
Advocates	2,330	6,670	(9,000)	-	-
John Lyon's Charity	4,177	8,667	(12,844)	-	-
Man Charitable Trust	-	7,373	(7,373)	-	-
Sir John Cass's Foundation	-	7,310	(4,842)	-	2,468
Total restricted funds	6,507	30,020	(34,059)	-	2,468
Total funds	46,716	78,111	(67,265)	-	57,562

Restricted funds – Child Advocates for Maths Project (Maths on Toast Bites)

A series of workshops to develop 5 short videos created with and presented by children (aged 8-11 years old) which will be made available online to promote positive engagement in family learning across the UK.

Restricted funds – Man Charitable Trust

This was a one year grant supporting a marketing and operations manager role for the charity.

12. Analysis of net assets

	Unrestricted Funds 2020	Restricted Funds 2020	Total Funds 2020	Unrestricted Funds 2019	Restricted Funds 2019	Total Funds 2019
Current assets	74,630	38,680	113,310	86,911	2,468	89,379
Current liabilities	(11,435)	(22,230)	(33,665)	(31,817)	-	(31,817)
	63,195	16,450	79,645	55,094	2,468	57,562

13. Trustee remuneration

During the year, no trustee received any remuneration (2019: £Nil). No members of the Board of Trustees received reimbursement of expenses (2019: £Nil).

14. Related party transactions

During the year there were no transactions carried out with related parties (2019: £Nil).



If you would like to know
more, please get in touch...

020 7613 8389

info@mathsontost.org.uk

www.mathsontost.org.uk

[@mathsontost](https://www.instagram.com/mathsontost)

Donate online through
Virgin Money Giving

Maths on Toast is a charity based in
England and Wales

Registered charity no. 1151486

Registered company no. 08196529

Registered address: c/o NCC Space, Block D,
Hackney Community College, London N1 6HQ

Annual Report design: Aimee Capstick