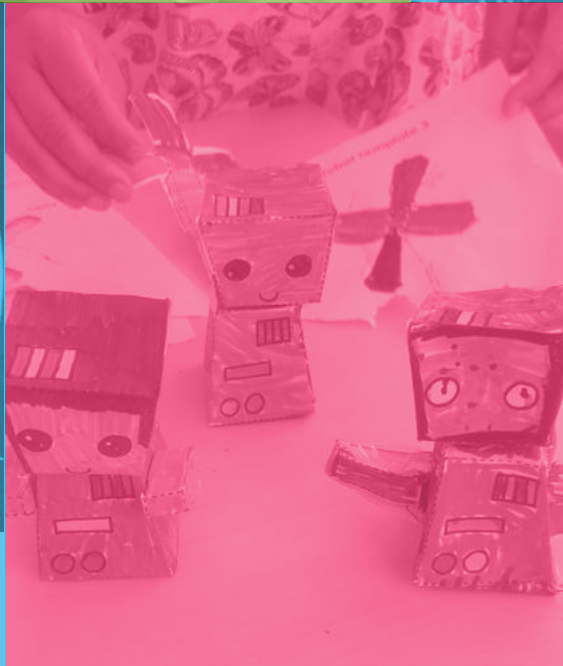
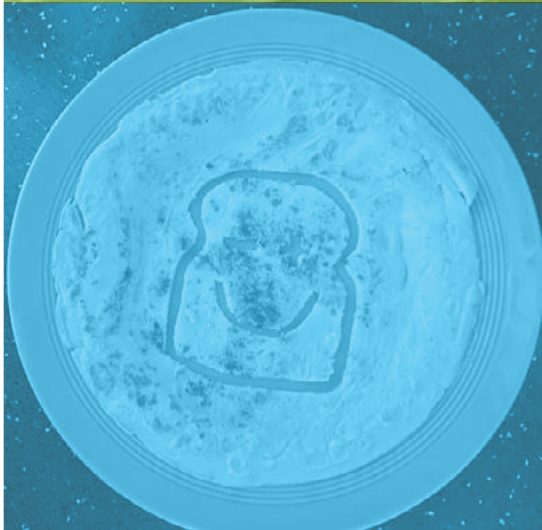
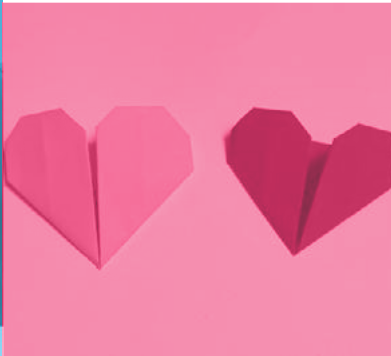




maths on toast

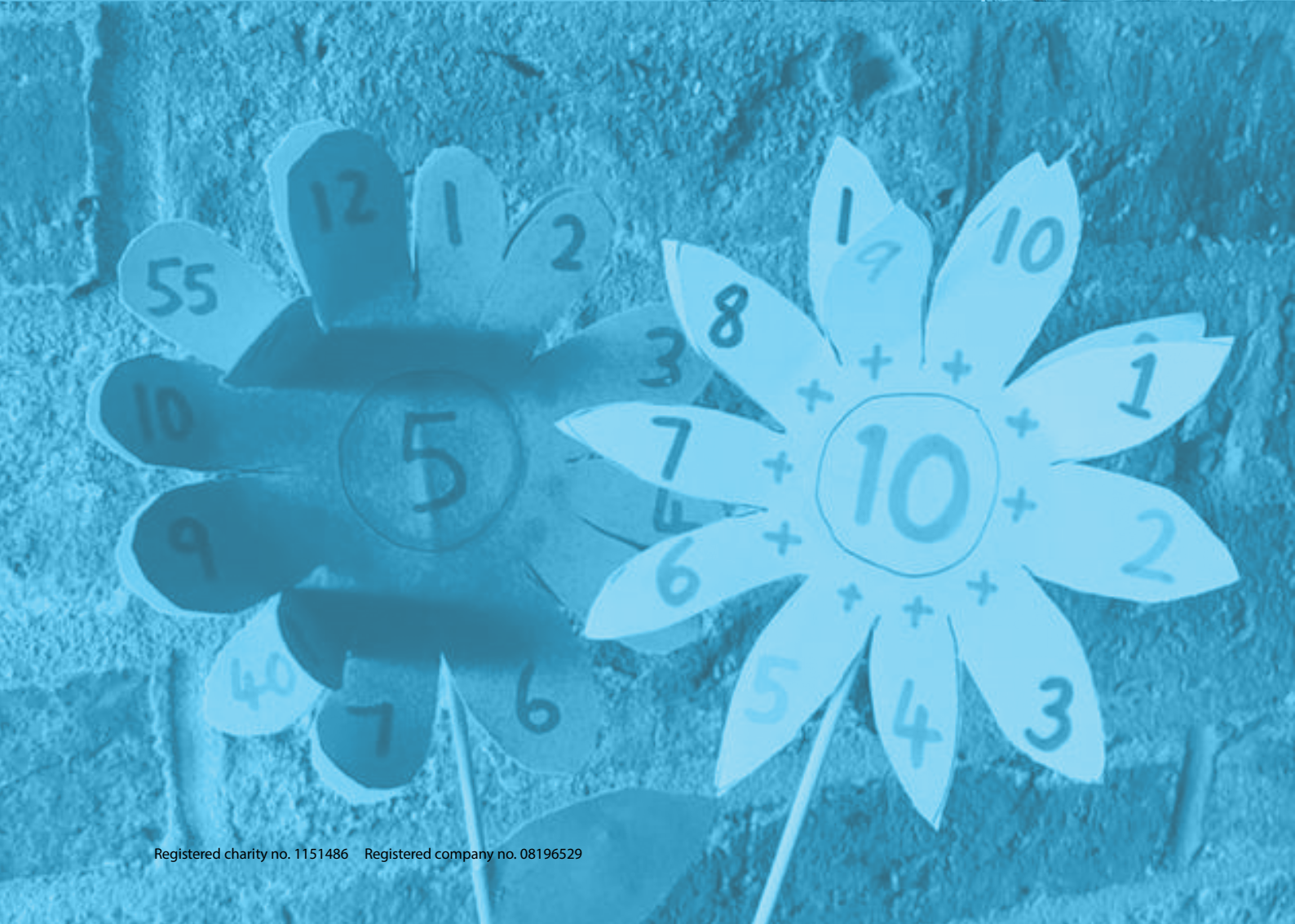
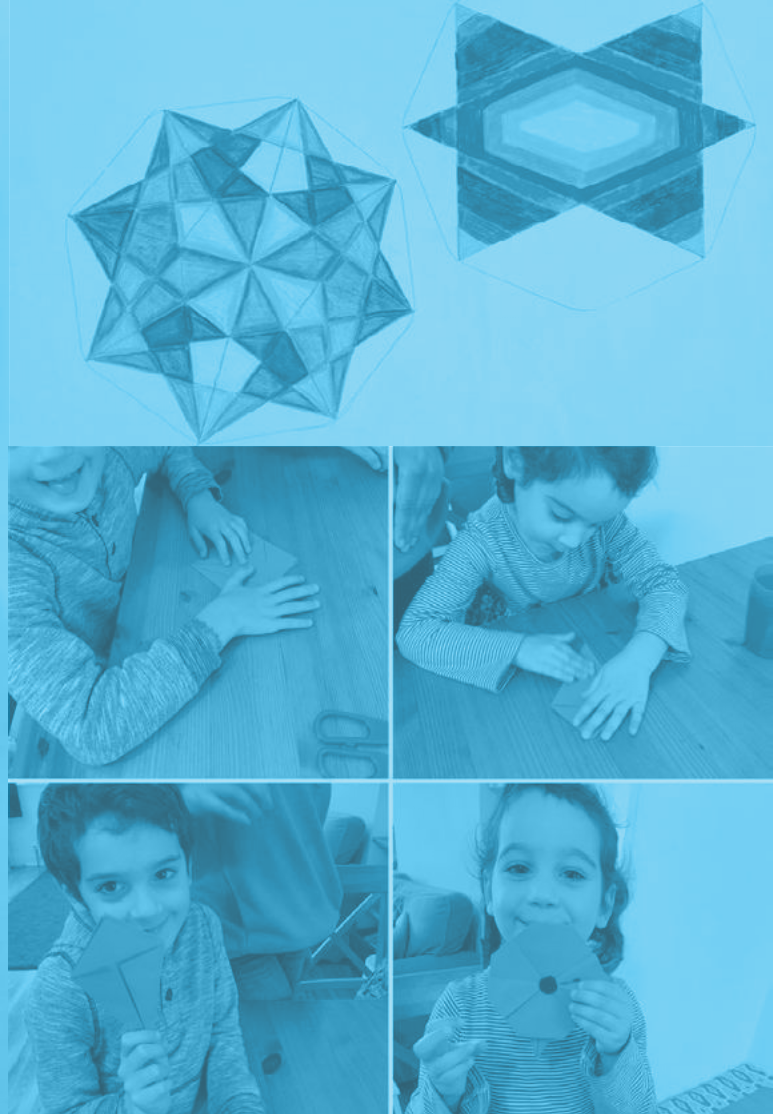
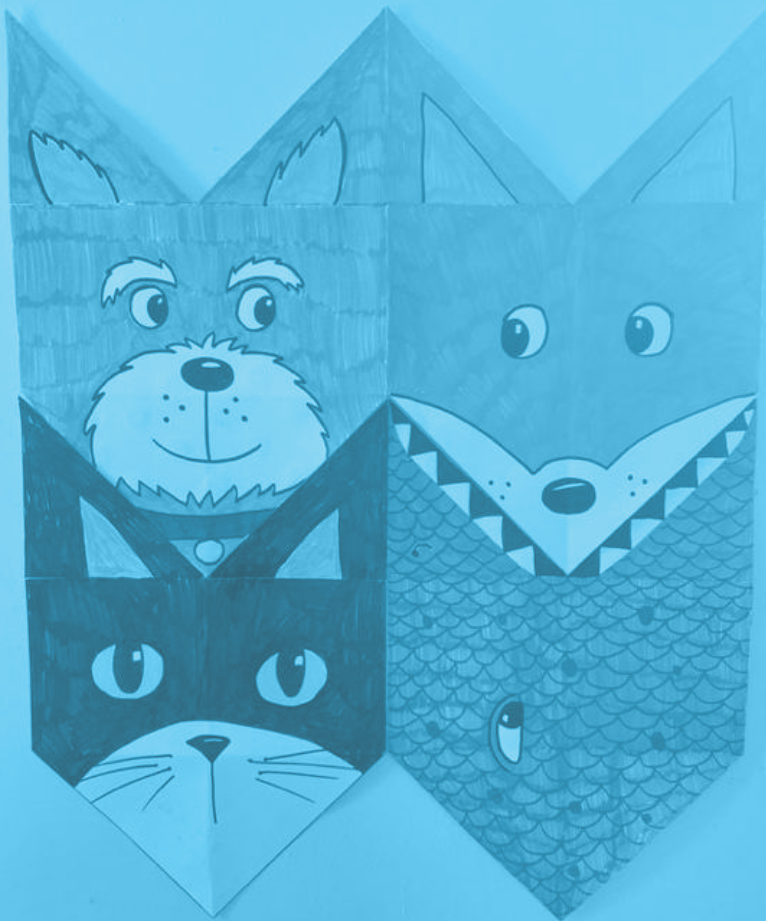
the family maths charity



Registered charity no. 1151486
Registered company no. 08196529

ANNUAL REPORT

1 SEPTEMBER 2021 TO 31 AUGUST 2022



ANNUAL REPORT

1 SEPTEMBER 2021 TO 31 AUGUST 2022

Contents

Section 1: From our leadership team 4

- From the Chief Executive
- From the Trustees
- 2021/2022 Stats
- Thanks
- The Need and Theory of Change
- Toast Model
- How to Build Maths Confidence
- 5 Key Principles

Section 2: Time to spring back into action — making sure to acknowledge valuable learning from the previous year. 17

- Strategy and operations 2021/2022
- Creative Maths Approach — 5 Key Principles
- What we did this year
- Back in Action!
- Training and Cascade delivery programmes
- Digital Content for Hands-On Maths Activities Wherever You Are
- More Creative Content to Inspire
- Growing our Reach and Engagement

Our team 34

Accounts 36

Section 1: From our leadership team

From the Chief Executive

September 2021 – 22 saw Maths on Toast able to spring back into action, re-establishing pre-Covid activity as well as pushing forward on new offers, with a focus on training and projects to continue to develop and grow our reach.

The year started for me with a CPD workshop, delivered to an enthusiastic group of community, family and museum practitioners and educators. This served as a catalyst to finalising development and starting roll-out of our Community Champion Programme — training in the Maths on Toast approach combined with regular provision of our resources. This enables family practitioners to run their own sessions, in their own settings, all with our support.

We have been successful in incorporating the lessons learnt from the last couple of unpredictable years to refresh and reinvigorate our way of working. Always retaining our hands-on approach at the core of our activities, we use ‘digital point of access’ as a way for our partners and those who work with families to take our activities and ethos and share more widely.

The publication of our 5 Key Principles has helped us communicate clearly the ‘why’ behind our ethos and approach — always important as for so many, a rigid approach to maths is hard to shake off.

It is worth noting that we had accrued extra/additional reserves throughout the Covid period — these extra reserves have now been incorporated into the 22–23 budget to spend down and bring us to our usual level of reserves.

This year we said goodbye to Nathalie Megriche, General Manager and Niki Lavithis, Community Coordinator and welcomed Sally Stevens and Neva Brentnall to the team. Maths on Toast welcomed new Trustees Karrie Liu and Tanveer Sian to the board. At the very end of the year, Professor Alison Clark-Wilson stood down as Trustee to become Patron and Advisor.

By the time this report is published, I will also have said goodbye to Maths on Toast. I'd like to thank everyone I have worked with — it has been a fantastic 4 years. Long may Maths on Toast continue to flourish, showing that there is more than one way to approach maths and maths learning. Our creative, hands-on, playful family approach will help generations to come.



Lucy Davis
CEO

From the Trustees

This report captures the context in which Maths on Toast was operating through 2021–22, which was marked by a return to in-person activity and engagement after the operational challenges from the Covid-19 pandemic. As trustees we are proud of the way in which the team has managed to return to usual modes of delivery, forming and consolidating new relationships and providing creative and engaging experiences for young people and their families. It has also been encouraging to see new members of the team retain the core values of the charity.

On behalf of the Trustees, we would like to offer our thanks to the funders and partners across the UK who have continued to be supportive of our work and mission. In London, we resumed in-person delivery in various community centres and libraries and had face-to-face family engagements with 169 families and 320 children, which marked a considerable increase from the previous year. We also saw a near 400% increase in our Stay-In school sessions. A significant reason for these marked changes is attributed to challenges in the external environment caused by Covid, but it is also down to the resilience and proactive nature of the staff team. Additional successes include being the no.1 download resource for NSPCC for Number Day in February, which is testament to our ability to utilise a hybrid approach to engaging with families.

We also made the strategic decision to expand our reach, developing key relationships with Home-Start UK and Learning Link Scotland. The latter in particular has helped open Maths on Toast to a breadth of opportunities, encouraging us to develop different delivery modes to respond to increased demand for our services including a 'train the trainer' cascade model, which will ultimately see our unique model utilised in more spaces than we could ever have imagined.

Lucy Davis was a key part of the organisation before leaving at the end of 2022. Lucy's stalwart leadership and commitment to providing equality in learning has been crucial for Maths on Toast, especially during uncertain times. Additionally, we were sad to see Nathalie and Niki leave the charity, but welcomed two new members to the team in Neva and Sally who are responsible for operations and administration respectively. Following Lucy's departure, the board made the decision to appoint Susan and Neva as co-directors encouraged by their ideas, attitudes and commitment to supporting Maths on Toast's long term strategic ambitions.

2022 was also the year that we said farewell to Professor Alison Clark-Wilson, one of the founding Trustees who saw the charity grow from a pop-up in a vacant shop to an impactful organisation with wide reach. Alison has been a constant voice for the promotion of creating non-judgemental spaces for young people to learn, and we hope she will continue to do so in her role as patron. She leaves a diverse Trustee Board full of individuals who are keen to support the Maths on Toast mission going forward with energy and enthusiasm!



Dami Solebo
Chair

Objects and public benefit

The object of Maths on Toast, as per its articles of association, is to advance the education of the public in mathematics, in particular, but not exclusively, through exhibitions, installations and related learning activities. The Trustees confirm that they have complied with the duty in section 4 of the Charities Act 2011 to have due regard to the public benefit guidance published by the Charity Commission in determining the activities undertaken by the Charity and outlined in this report.

2021/2022 statistics

71,426

UNIQUE PAGE VIEWS

(UP 49.58%)

DIRECT ONLINE FAMILY
ENGAGEMENTS:

148 FAMILIES 180 CHILDREN

(DOWN 35.09% – MOST
LIKELY DUE TO THE RETURN
OF IN-PERSON EVENTS)MONTHLY LIVE ONLINE
FAMILY STAY-IN SESSIONS:

12

UNIQUE WEBSITE
VISITORS:

33,397

(UP 43.92%)



TWITTER FOLLOWERS:

2800

(UP 8.36%)

FACEBOOK
FOLLOWERS:

721

(UP 19.17%)

NEWSLETTER STATS

1145

SUBSCRIBERS

56%

OPEN & READ RATE



13,400

YOUTUBE CHANNEL
VIDEO VIEWS

(UP 52.32%)

STAY-IN SCHOOLS
SESSION ENGAGEMENT:

(UP 391.63%)

MATHS WEEK
SCOTLAND
(SEP 2021)

36

CLASSES WITH
APPROXIMATELY

1575

CHILDREN

MATHS WEEK
ENGLAND
(NOV 2021)

220

CLASSES WITH
APPROXIMATELY

5000

CHILDREN

MATHS WEEK
LONDON
(JUNE 2022)

69

CLASSES WITH
APPROXIMATELY

8764

CHILDREN

FACE-TO-FACE FAMILY
ENGAGEMENTS:

169 FAMILIES
320 CHILDREN

(UP 1200%)

FACE-TO-FACE COMMUNITY
MATHS EVENTS:

30
SESSIONS
DELIVERED



TIKTOK VIEWS

6486

(STARTED DEC 2021)



3550

MIURA FOLD
VIDEO VIEWS



We want to thank our partners for supporting our efforts over the last year.



- Man Charitable Trust
- John Lyon's Charity
- Portal Trust
- Camden Libraries (and staff at Pancras Square Library)
- Brent Libraries (and staff at Ealing Road Library)
- NSPCC
- Cambridge Mathematics
- Learning Link Scotland
- Campaign for Learning
- Glasgow Science Centre
- Maths Week London
- Maths Week England
- Maths Week Scotland
- The six London Maths Hubs
- National Numeracy
- The Switch
- Bigland Green, Manorhouse, Thomas Buxton, St Elizabeth, Old Palace, St Agnes primary schools, Marion Richardson School
- Family Learning Camden
- The Winch
- Home-Start Camden & Islington
- Kentish Town City Farm
- And our many other partners, supporters, donors and volunteers

The Need and Theory of Change

Our Theory of Change, explains how our creative, community maths activities can support positive experiences of maths — needed because maths anxiety, along with inherited beliefs about maths ability, is prevalent in the UK.

The Need

Maths is a core school subject and numeracy is linked to life chances ¹. Our economy and society need mathematically literate people. Yet negative attitudes to maths prevail in the UK, from 'I can't do maths' as an (imitated and inherited) facet of identity to mathematically disabling 'maths anxiety' ².

Vision

We want everyone to feel positive about maths — to feel that it is something they can do, and enjoy

Mission

To make maths a creative, enjoyable, human, social activity for families and communities

Model

We run events, develop activity and product ideas and work in partnership to create fun, meaningful and impactful ways of engaging with maths

People taking part in our activities will...

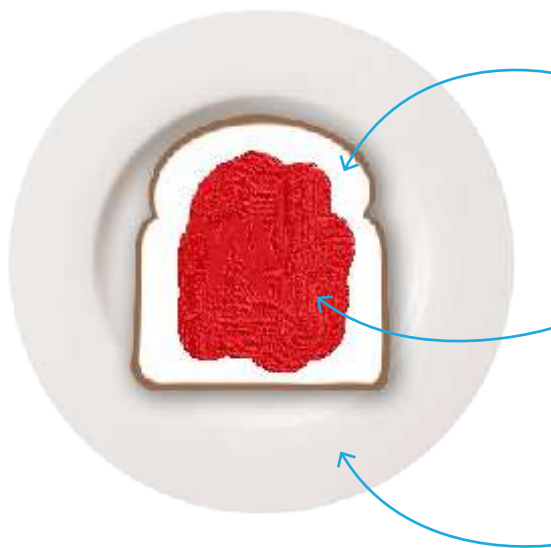
- Enjoy doing maths together, and be aware it is maths they are enjoying
- Be supportive of others' mathematical learning
- Have positive, shared family memories of mathematics
- Broaden their view of what maths is
- Engage in mathematical activities, showing concentration, play, and perseverance
- Increase their enthusiasm for maths, reduce any fear of it — and do more, afterwards
- Increase their confidence in maths — seeing it as something they can do
- Interact with a broad section of the community and become more aware of the opportunities maths opens up to them

References

1. Carpentieri, J.D., Litster, J., and Frumkin, L. (2009) Adult Numeracy: A Review of Research. NRDC.
2. National Numeracy (2015) Attitudes towards maths – Research and approach overview. Retrieved from www.nationalnumeracy.org.uk, January 2017.

Toast Model

Our Toast Model is a simple, accessible and fun tool to help children and families explore the emotional journey of learning and understand how to develop mathematical resilience. Taking inspiration from Sue Johnston-Wilder's concept of the Growth Zone Model, (Johnston-Wilder et al, 2015) — which is a framework for understanding different learning experiences and related feelings and has strong links to Growth Mindset (Carol Dweck 2012) — the Toast Model is a playful way to examine, assess and evaluate.



Toast Zone

The maths feels chewy, crunchy, hard but you know you can get your teeth into it. Some buttery support might make it more digestible. You can persevere and learn. Also called the Growth Zone.

Jam Zone

Sweet, this maths feels super easy! But are you learning? This is also called the Comfort Zone. Try to find a harder problem.

Off the edge

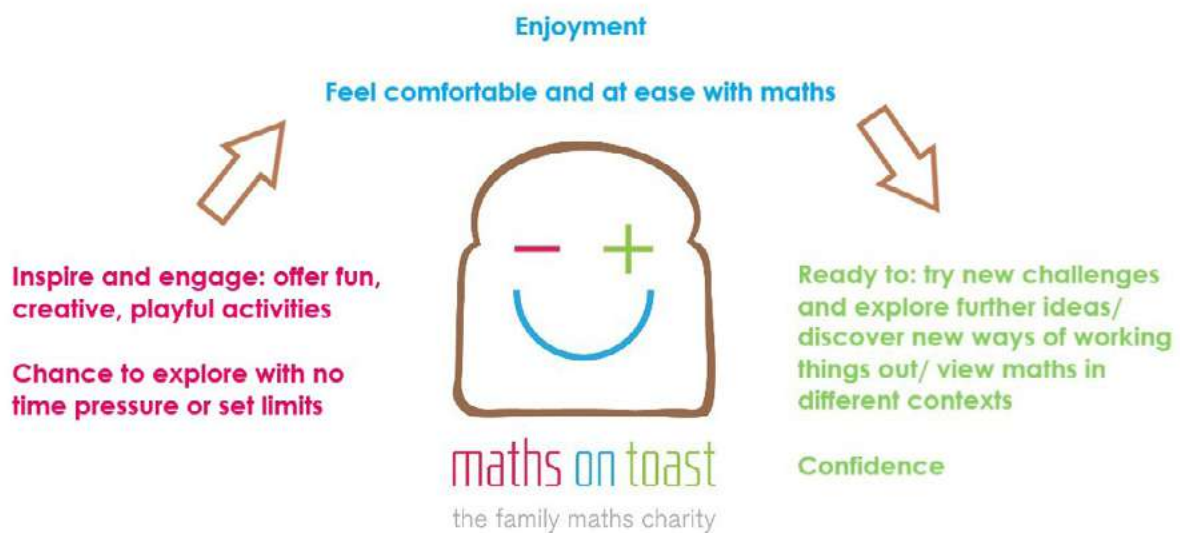
Cold, empty, lonely, impossible-feeling. For ways to avoid panic and work your way back to the toast visit our website.

How to Build Maths Confidence

Being confident in maths starts with feeling comfortable and at ease with maths.

- Being ready to explore mathematical ideas and make mistakes
- Taking time to try different ways out
- Discovering how all the ideas fit together

We encourage this with our creative, hands-on approach — providing crafty, playful maths activities and ideas to inspire curiosity and exploration.



5 Key Principles

New for 2021 – 2022 Why we do what we do

5 key principles underpin our creative maths approach, helping to develop a deeper understanding of mathematical concepts.

This understanding of maths concepts lays the foundation for maths mastery and number sense.

1. Enjoyment of maths

This shapes a **positive mindset and attitude** that enables and increases readiness for learning.

2. Investigating and making mistakes

Taking the time to explore mathematical ideas and concepts will encourage **lateral thinking and problem solving**.

Being happy and comfortable to make mistakes and try again can build a **confident, can-do and resilient** learner.

These are key skills both in mathematics and in everyday life.

3. Learning through hands-on play

Active, child-centred learning is crucial in child development, applicable to maths as with any other area of learning.

Adopting a **hands-on learning approach** to explore maths concepts early on can support more abstract mathematical thinking and understanding later.

4. Exploring and embracing spatial maths

There is a key correlation between spatial reasoning and maths progression.

Exploring space, shape and measure — known as spatial maths — **helps lay the foundation for later maths understanding**.

5. Showing maths as real and relatable

Seeing maths in the real world changes people's perceptions of it.

Maths is a **core life skill** as well as a core school subject, it is something you can make, touch and do.

Connecting it to everyday life and the world around us highlights that maths really is everywhere.

to create your own artwork

For more ideas visit www.mathsoutloud.org.uk
 Share your creations and comments on Twitter, Facebook or Instagram
 Maths Out Loud using #positivemaths

to create your own artwork

For more ideas visit www.mathsontoast.org.uk
 Share your creations and comments on Twitter, Facebook or Instagram
 #mathsontoast using #positivemaths



Section 2: Time to spring into action — making sure to acknowledge valuable learning from the previous year.

Strategy and Operations 2021/2022

This year commenced with confidence that standard delivery could be resumed. A clear strategy was in place to enable us to connect with a growing number of families. This plan would see both a return to pre-Covid strategies and the fine-tuning of Covid-19 adaptations and learning. This included:

- Getting our face-to-face sessions and partner projects back up and running as soon as possible.
- Pushing on with development and roll-out of our training programmes and cascade delivery model.
- Effectively integrating our enhanced digital point of access resources and engagement projects into our standard offer.
- Developing 5 key principles: refining and redefining our messaging to create a clear set of audience-adaptable messages that explain the benefits of our approach and 'why we do what we do'.
- Refreshed networking and partnership building to work with family and community learning teams, libraries, family charities.
- Programme development to explore direct-trade income.

Creative Maths Approach — 5 Key Principles

This year we continued to work on creating clear, simple messaging and realised that we could and should explain the importance of ‘Why We Do What We Do’ a little more clearly and show why ‘playing with maths’ creatively is such a crucial step in laying a foundation for maths learning at all ages.

We understand from our work with families that people often have strong feelings about maths and for some, negative experiences of maths such as time-pressured maths (being put ‘on the spot’) may have caused their dislike. Exploring maths in creative, active, hands-on ways and learning to play with mathematical ideas will build skills that help everyone — however they feel about maths — in both early and later stages of maths learning.

We used a wide-range of research and evidence to formulate five key principles that underpin our creative approach, helping to develop a deeper understanding of mathematical concepts. The 5 Key Principles have been added as a website feature and have been incorporated into all of our training. They will be integrated across all of our projects and programmes and be adaptable for all ages.

What We Did This Year

Our focus was to get back to face-to-face delivery offering hands-on, creative opportunities for children and their grown-ups to explore mathematical ideas and concepts in a family friendly, Maths on Toast way. We continued to build relationships and deliver projects with partner organisations, working with libraries, schools and community groups. We recommenced monthly events in Camden and Brent adding new venues into our offer and delivered our first school coffee mornings since Covid-19.

Our Number Partners work with The Switch to develop and deliver training and resources for corporate volunteers visiting primary schools in Tower Hamlets recommenced as schools allowed more in-person visits.

This year saw the development and roll out of our Community Champion Programme, with the learning team in Dumfries and Galloway Council being the first to receive training. Staying in Scotland — we also delivered a CPD workshop and lay the foundations for a fantastic new partnership with Learning Link Scotland.

In partnership with Campaign for Learning with funding sought by them, we developed a pilot project to offer our Coffee Morning Programme in 2 phases: face-to-face and online with delivery due to take place next year in schools in Bexley.

We were happy to support the Bullseye Maths initiative from the Professional Darts Corporation and became a named charity partner. We provided advice, guidance and consultancy; helped shape messaging around building confidence in maths and the role that playing darts can have.



Our digital monthly Stay-In sessions remained popular for those unable to make our Face-to-Face events, as were Stay-In sessions offered to schools as part of the three Maths Weeks.

As part of our strategy to offer simple projects accessible to all — families, libraries, schools, community groups, we increased the number of Join-In Projects this year offering a Spring, Summer and Autumn activity.



Back in Action!

Libraries

It was great to be back working with our friends at Pancras Square Library and Ealing Road library. This year it was more important than ever to work closely with them to promote our events and get the word out that we were back! We continued to listen to our families, partners and volunteers — adapting

sessions to accommodate reduced numbers, incorporating booking systems and providing safe environments as everyone adjusted to the new ‘normal’ following Covid-19 — whilst ensuring our hands-on, creative approach remained in place.



“Since we restarted the live events in the Ealing Rd Library, the Maths on Toast sessions are the most well attended ones and staff are delighted about the progress.”

Dhurata Loku, Ealing Road Library

“I have put the date in the diary! (and keep my fingers crossed for sure). Look forward to seeing the team again and for my daughter (and me!) to learn maths in a much more interesting and exciting way.”

Parent missing the face-to-face library sessions at Pancras Square Library

“I am so delighted that families turned up. Staff were very pleased to help and very much enjoyed it! Thank you again, we are delighted that Maths on Toast are back at the library.”

Jean Aston, Pancras Square Library



The Farm

Having previously worked with Kentish Town City Farm and following on from a successful event last year, we were delighted to start delivery of monthly events at the farm. Our creative maths activities suitable for children aged 4–12 were hand-picked to be easily adapted for younger visitors. The farm was a great opportunity for us to work with families who might not usually access maths activities and the venue was perfect for hands-on, playful, active maths fun in an outdoor environment.



“It was too fun to be maths!”

Child at Kentish Town City Farm

Coffee Mornings

We were pleased to deliver 4 coffee morning sessions to the parents and children of Marion Richardson School in Tower Hamlets. We used the opportunity to share with parents how our 5 Key Principles underpin our creative maths approach through the weekly activities. Parent feedback confirmed that the sessions were enjoyable and gave participants the confidence to do more maths as a family at home. The school has requested that Maths on Toast return next year.

Our partnership with Home-Start Camden and Islington also re-started with a session taking place at their offices in Islington. The session took place during half term so older siblings could attend and family practitioners also joined in. We had children ranging from 6 months to 10 years old and concentrated on shape activities which were well received by families and staff.

“I really want to support my children to learn maths. I am currently studying to complete my GCSE in maths and this course has given me a positive outlook on my own learning and therefore will benefit my children.”

Parent, Coffee Morning Marion Richardson School



Number Partners

As schools re-opened their doors for visitors, we were delighted to pick up our partnership with The Switch following Covid-19 to provide resources and deliver online training for the first 32 corporate volunteers using our resources in 3 schools as part of the Number Partners programme. The Switch's Number

Partners programme recruits corporate volunteers to run weekly lunchtime maths sessions in primary schools. The programme aims to encourage, inspire and build confidence in maths. We will continue to work with the Switch to provide a full academic year of resources for 22/23.

“Maths on Toast have provided innovative and engaging resources to give our Number Partners volunteers creative and exciting ways to help pupils discover and play with maths.”

Rachel McMahon, The Switch



Training and Cascade Delivery Programmes

Our Maths on Toast Community Champion Programme provides in-depth training with monthly resources and guidance to empower and enable community and family educators and staff in schools to run hands-on Maths on Toast sessions in their own setting as accredited Maths on Toast Champions.

We delivered our first set of training in April 2022 with 2 members of the Lifelong Learning Team at Dumfries and Galloway Council.

Training is also booked for North Lanarkshire Council and Aberdeen Science Centre for the start of the 22/23 academic year.

Our creative maths and training workshops offer practitioners and educators from a range of settings the opportunity to explore our creative maths approach and learn how to incorporate more exploratory, hands-on maths in their own delivery and settings, and develop ideas for creating their own resources.

We delivered a one-day training workshop for 26 community and schools' practitioners in partnership with Learning Link Scotland. It took place at Glasgow Science Centre and was part of and funded by Maths Week Scotland. Over the 21/22 year we have collaborated with Learning Link Scotland and their contacts/networks in Scotland to talk to family and adult learning educators and practitioners about how the Community Champion Programme could work for them.

“I would like to thank you so much for these resources. They are amazing!”

Community Champion Programme delegate

“Today has transformed the way I think and feel about maths. Maths can be fun and interactive; I actually quite like maths; maths can be facilitated like any other subject”

Training workshop delegate



Digital Content For Hands-On Maths Activities Wherever You Are

A main focus in 21/22 was our Join-In Projects as part of our strategy to offer simple projects accessible to all. Resources can be taken digitally for use at home, in schools, in libraries and in communities.

We continued to improve the Activities and Resources page on the website ensuring resources are easy to find and have suitable, eye-catching images. We remained committed to sharing our signature creative, fun activities that use resources readily found within the home and offering simple alternatives to ensure our content is as accessible as possible. We continued to stress that “no printer

was no problem” and provided top tips for families to create their own templates, reproduce shapes or build structures.

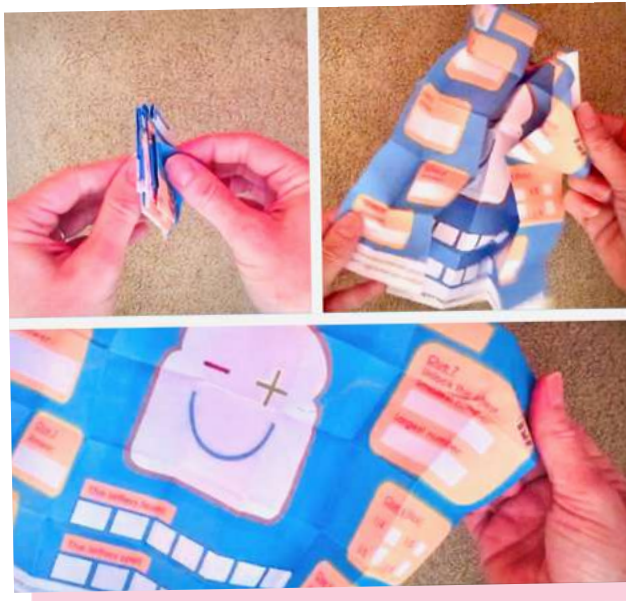
To track who uses our open-source activity packs we introduced a simple online form for families, community educators and teachers to complete before downloading.

Short videos

We continued to use short videos to engage with families seeking content via social media.

The Top 3 videos viewed on the Maths on Toast YouTube channel are:

1. How to... do a Miura Fold
2. How to... Make an Origami Poppy
3. How to Make... a Paper Coffee Cup



Stay-In Sessions — live online family maths and schools sessions

Our live 45 minute Stay-In sessions continued to take place on the 3rd Saturday of each month, bookable via Eventbrite. The make-a-long sessions offer an opportunity for families to explore maths together in the comfort of their own home and share their creations with other families across the UK and further afield.

Following our successful schools Stay-In session last year as part of Maths Week London, we offered three sessions for schools during 2021–2022 for Maths Week London, England and Scotland. Excellent uptake, fantastic feedback and increased demand has resulted in these sessions

becoming an annual fixture. We enjoyed more engagement on our social channels as schools were keen to share their Infinity Tiles and Tessellation creations with us to be included in the Maths on Toast online gallery.



“We really enjoyed joining this online session from Maths on Toast where we designed and made Infinity Tiles.”

@year_holy on Twitter

“We look forward to our monthly online maths activities, it’s a chance for the children to keep learning maths in a fun way.”

Parent, Online Stay-In session



“Thank you to Maths on Toast for the terrific session on tessellation today! Our pupils really enjoyed it and are eager to learn more about the work of Escher.”

Moorfoot Primary

“We took part in an activity linking maths and art — what better way to spend the morning! A fantastic, interactive and engaging Escher-inspired tessellation workshop provided by Maths on Toast — thank you!”

@BollinPrim5EG on Twitter



“They (the children) were all really engaged. They had good discussions about how their shapes fitted and what had gone wrong if they didn’t quite work.”

Teacher on evaluation form

Join-In Projects and Galleries

Join-In projects and galleries offer everyone — families at home, community groups, libraries and schools — the opportunity to take part in collaborative, imaginative hands-on maths. We provide a digital point of access ensuring the projects are easy to share and distribute. The comprehensive content consists of an activity sheet, instructions, templates and a short video to make joining in as straightforward as possible.

In 2021–2022 we ran 3 Join-In projects launched in spring, summer and autumn — TetraTREEdron, Terrific Tangrams and Infinity Tiles. These activities also featured in our monthly family Stay-In sessions and face-to-face sessions at the farm

and libraries, allowing even more families to be part of the project and share their creations with us. Infinity Tiles was also the activity for the popular school Stay-In session during Maths Week London.

“Love it. Imagine a whole class or school of TetraTREEdron trees!” #Maths #PaperCraft #Art #EndOfTerm #CreativeChristmas @aldburyprimary

Katharine Kelland on Twitter



More Creative Content to Inspire

Summer Fun with Little Robot

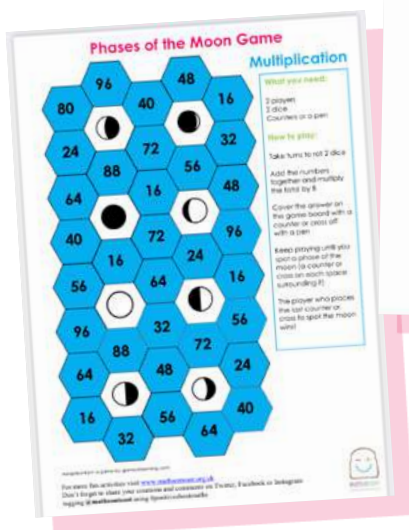
Summer Fun returned for 2021-2022 and to tie in with The Summer Reading Challenge's theme of Gadgeteers, we shared Little Robot's adventure to visit the moon. The 6-week programme explored a range of mathematical ideas and was filled with creative hands-on maths.

This year we worked on widening the reach of Summer Fun with community partners, libraries and schools. Activities were published on our website weekly but schools, holiday clubs, libraries, community settings were able to complete a form to receive the whole series in one PDF pack to print and send home/make available to families. This helped with our tracking and monitoring to see who used our open-

source resources. Extra guidance was also offered as part of the PDF pack for libraries/schemes/practitioners/groups wanting to run the activities in their own setting.

The programme's activities included a Pocket Solar System, Baking Moon Rock Cakes, Doodling Stars, Building a Rocket, The Phase of The Moon Game and Making a Little Robot.

The most popular Summer Fun activity in August 2022 was Little Robot, with 649 unique page visits.

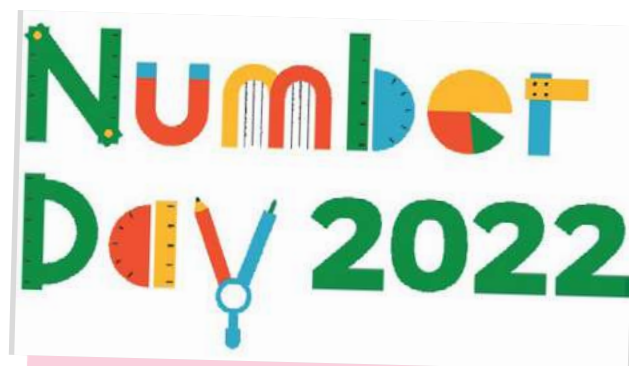


Growing our Reach and Engagement

Our Join-Ins, cascade training and CPD workshops are all part of our strategy to grow our reach and engagement by enabling others to use our approach and resources. We continue to place a high value on partnerships; working at Maths on Toast; we provide the creative maths expertise and our partners help us reach more families. This year we continued to support partner campaigns such as NSPCC Number Day and Refugee Week, providing creative maths resources for activity packs and linking to online events such as the Mental Health Collective's #KindnessByPost.

NSPCC Number Day

We continue to partner with NSPCC and support their Number Day campaign by providing creative Maths on Toast resources for all participating schools to use. We were delighted that our Fibonacci activity was the number one downloaded activity for 2022 with 3545 total downloads and Multiple Heartbeats, a new activity we contributed for this year came in at number 4 with 2264 total downloads.



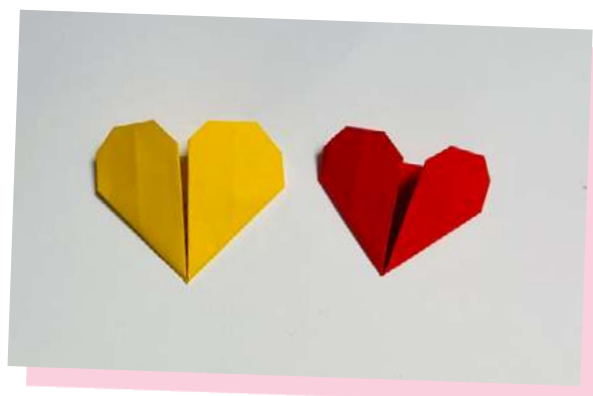
Refugee Week

The theme for Refugee Week 2022 was 'Healing'. We were delighted to be asked to provide one of the creative maths activities for the Children and Young People's Learning Pack for the second year running. We used the opportunity to tie in with our Summer Join-In Project: Infinity Tiles as the decorative design concept encouraged families to explore maths through art whilst coming together to celebrate community and collaboration.



#KindnessByPost

We continued to show our support for the Mental Health Collective's Kindness by Post by linking our origami heart activity.



#EveryPoppyCounts

We suggested creating a poppy using the mathematical art of origami! Our poppy instructional video remained one of our most watched videos of 2021–2022.

The Big Draw

The theme of The Big Draw 2021 was 'Make The Change' so we invited families to explore gardens, parks and the local countryside to discover symmetrical insects. We had 31 families with 55 children take part in our creative maths events at Kentish Town City Farm and Wembley Library.





Section 3: Our Team

Founder



Alexandra Fitzsimmons

Staff



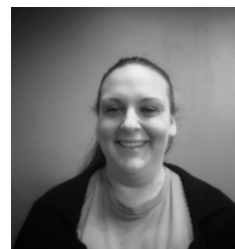
Lucy Davis
CEO



Susan Bugby
Community & Schools
Outreach Manager



Niki Lavithis
Community & Schools
Outreach Manager



Neva Brentnall
Community & Schools
Outreach Manager



Nathalie Meghriche
General Manager



Sally Stevens
Administration and
Communications Manager

Structure, governance and management

Maths on Toast is a company limited by guarantee, number 08196529, and a registered charity in England and Wales, number 1151486. The organisation's Governing Document is its Articles of Association, incorporated 30 August 2012. Day-to-day management of Maths on Toast is delegated by the Trustees to the Chief Executive Officer, Lucy Davis, who reports to the Board of Trustees at regular meetings, held once every 6 weeks throughout this reporting period.

Trustees



Dr Alison Clark-Wilson
(until August 2022)



Dami Solebo



Krystle McGilvery



Gemma Mann



Melanie Huntley



Sarah Watzek



Tanveer Sian
(from August 2022)



Karrie Liu
(from August 2022)

For biographies of our trustees and staff team visit our website

Accountants

Andy Nash Accounting &
Consultancy Ltd

Volunteers

Thanks to all of our volunteers for contributing their time, energy and creativity.

Selection and appointment of Trustees

The Trustees may appoint new members by general agreement, in particular where specialist skills are required. There must be no less than three trustees and no more than eight. New members are fully briefed on their obligations under charity and company law, and are given information on the decision-making processes, the financial performance of the Charity and the business plan.

Risk management

The Trustees have considered the major risks to which the Charity is exposed and established procedures to manage those risks. They have implemented reviews and procedures to mitigate those risks, including a review of risks and liabilities at two Board meetings a year

Accounts

Financial Review

During the current financial year, the Charity incurred a deficit of £23,482 (2021: surplus of £18,409) decreasing total reserves at year end to £74,572 (2021: £98,054).

Of the reserves held at year end, £66,376 (2021: £80,318) related to unrestricted funds and £8,196 (2021: £17,736) related to restricted funds.

Reserves Policy

The Trustees have considered Charity Commission guidance on reserves. The Maths on Toast Reserves Policy is set to maintain a sufficient level of reserves to enable normal operating activities. The reserves level has been set to ensure that the Charity is able to continue over a period of at least 6 months should a shortfall in income occur. It also takes account of potential risks and contingencies that may arise from time to time.

Therefore, the Trustees have set a minimum reserves level of £35,000 at the end of the financial year 2021-2022. The year-end unrestricted reserve of £66,376 safely exceeds this minimum level.

Statement of Board of Trustees' Responsibilities

The trustees are responsible for preparing the Trustees' Annual Report and the financial statements in accordance with applicable law and regulations. Company law requires the trustees to prepare financial statements for each financial year. Under that law they are required to prepare the financial statements in accordance with UK Accounting Standards and applicable law (UK Generally Accepted Accounting Practice), including FRS 102 The Financial Reporting Standard applicable in the UK and Republic of Ireland.

Under company law the trustees must not approve the financial statements unless they are satisfied that they give a true and fair view of the state of affairs of the charitable company and of the excess of expenditure over income for that period. In preparing these financial statements, the trustees are required to:

- select suitable accounting policies and then apply them consistently;
- observe the methods and principles in the Charities SORP;
- make judgements and estimates that are reasonable and prudent;
- state whether applicable UK Accounting Standards have been followed, subject to any material departures disclosed and explained in the financial statements, and;
- prepare the financial statements on the going concern basis unless it is inappropriate to presume that the charitable company will continue its activities.

The trustees are responsible for keeping adequate accounting records that are sufficient to show and explain the charitable company's transactions and disclose with reasonable accuracy at any time the financial position of the charitable company and enable them to ensure that the financial statements comply with the Companies Act 2006. They have general responsibility for taking such steps as are reasonably open to them to safeguard the assets of the charitable company and to prevent and detect fraud and other irregularities.

The trustees are responsible for the maintenance and integrity of the corporate and financial information included on the charitable company's website. Legislation in the UK governing the preparation and dissemination of financial statements may differ from legislation in other jurisdictions. In addition, the trustees confirm that they are happy that content of the annual review in pages 4-37 of this document meet the requirements of both the Trustees' Annual Report under charity law and the Directors' Report under company law.

They also confirm that the financial statements have been prepared in accordance with the accounting policies set out in the notes to the accounts and comply with the charity's governing document, the Charities Act 2011 and Accounting and Reporting by Charities: Statement of Recommended Practice applicable to charities preparing their accounts in accordance with FRS 102, The Financial Reporting Standard applicable in the UK and Republic of Ireland second edition (effective 1 January 2019).

Preparation of the report

This report has been prepared taking advantage of the small companies exemption of section 415A of the Companies Act 2006.

This report was approved and authorised for issue by the Board of Trustees on 16th May 2023 and signed on its behalf by:



Krystle McGilvery
Treasurer, Board of Trustees
Independent Examiner's Report to the
Members of Maths on Toast

Independent examiner's report

I report to the Trustees on my examination of the accounts of Maths on Toast (charity number 1151486, Companies House number 08196529) for the year ended 31 August 2022 which are set out on pages 36-49.

Respective responsibilities of trustees and examiner

The Trustees (who are also the directors of the company for the purposes of company law) are responsible for the preparation of the accounts in accordance with the requirements of the Companies Act 2006 ('the 2006 Act'). The Trustees consider that an audit is not required for this year under section 144(2) of the Charities Act 2011 ('the 2011 Act') nor under Part 16 of the 2006 Act, and that an independent examination is needed.

Having satisfied myself that the accounts of the Company are not required to be audited under Part 16 of the 2006 Act and are eligible for independent examination, it is my responsibility to:

- examine the accounts under section 145 of the 2011 Act;
- to follow the procedures laid down in the general directions given by the Charity Commission under section 145(5)(b) of the Charities Act; and,
- to state whether particular matters have come to my attention.

This report, including my statement, has been prepared for and only for the Charity's Trustees as a body. My work has been undertaken so that I might state to the Charity's Trustees those matters I am required to state to them in an independent examiner's report and for no other purpose. To the fullest extent permitted by law, I do not accept or assume responsibility to anyone other than the Charity and the Charity's Trustees as a body for my examination work, for this report, or for the statements I have made.

Basis of independent examiner's statement

My examination was carried out in accordance with general directions given by the Charity Commission. An examination includes a review of the accounting records kept by the Charity and a comparison of the accounts presented with those records. It also includes consideration of any unusual items or disclosures in the accounts and seeking explanations from the Trustees concerning any such matters.

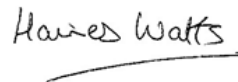
The procedures undertaken do not provide all the evidence that would be required in an audit, and consequently no opinion is given as to whether the accounts present a 'true and fair' view and the report is limited to those matters set out in the statement below.

Independent examiner's statement

I have completed my examination. I confirm that no material matters have come to my attention in connection with the examination giving me cause to believe that in any material respect:

- accounting records were not kept in respect of the Company as required by section 386 of the 2006 Act; or,
- the accounts do not accord with those records; or,
- the accounts do not comply with the accounting requirements of section 396 of the 2006 Act other than any requirement that the accounts give a 'true and fair view which is not a matter considered as part of an independent examination; or,
- the accounts have not been prepared in accordance with the methods and principles of the Statement of Recommended Practice for accounting and reporting by charities applicable to charities preparing their accounts in accordance with the Financial Reporting Standard applicable in the UK and Republic of Ireland (FRS 102).

I have no concerns and have come across no other matters in connection with the examination to which attention should be drawn in this report in order to enable a proper understanding of the accounts to be reached.



Bianca Permal FCA

**For and on behalf of Haines Watts
Berkhamsted Limited**

**4 Claridge Court
Lower Kings Road
Berkhamsted
Hertfordshire, HP4 2AF**

Date: 26th May 2023

Statement of Financial Activities

Incorporating the Income & Expenditure Account and the Statement of Recognised Gains & Losses

For the year ended 31 August 2022

	<i>Notes</i>	Unrestricted Funds 2022	Restricted Funds 2022	Total Funds 2022	<i>Total Funds 2021</i>
Income from:					
Donations and legacies	2	29,958	15,000	44,958	<i>96,919</i>
Charitable activities	3	7,646	-	7,646	<i>3,832</i>
Total income		37,604	15,000	52,604	<i>100,751</i>
Expenditure on:					
Raising funds	4 & 5	15,268	-	15,268	<i>14,520</i>
Charitable activities -					
Community Maths	4 & 6	21,136	13,811	34,947	<i>42,827</i>
Partnerships and collaborations	4 & 6	15,142	10,729	25,871	<i>24,995</i>
Total expenditure		51,546	24,540	76,086	<i>82,342</i>
Net income/(expenditure)		(13,942)	(9,540)	(23,482)	<i>18,409</i>
Reconciliation of funds:					
Balance brought forward	11 & 12	80,318	17,736	98,054	<i>79,645</i>
Balance carried forward	11 & 12	66,376	8,196	74,572	<i>98,054</i>

Balance Sheet

As at 31 August 2022

	<i>Notes</i>	Total Funds 2022	<i>Total Funds 2021</i>
Current assets			
Stocks	8	8,754	9,006
Debtors	9	350	573
Cash at bank and in hand		73,673	100,284
Total current assets		82,777	109,863
Creditors - amounts falling due within one year	10	(8,205)	(11,809)
Net current assets		74,572	98,054
Net assets		74,572	98,054
Funds of the charity:			
Restricted funds	11 & 12	8,196	17,736
Unrestricted funds			
General funds	11 & 12	66,376	80,318
		66,376	80,318
		74,572	98,054

The financial statements have been prepared in accordance with section 415A of the Companies Act 2006 relating to small companies and FRS 102 Section 1A.

The charitable company is entitled to exemption from audit under section 477 of the Companies Act 2006 for the year ended 31 August 2022, and the members have not required the charitable company to obtain an audit of its financial statements for the year ended 31 August 2022 under section 476 of the Companies Act 2006.

The directors acknowledge their responsibilities for complying with the requirements of the Act with respect to accounting records and the preparation of the accounts.

They were approved and authorised for issue by the Board of Trustees on 16th May 2023 and signed on their behalf by:



Krystle McGilvery
Treasurer, Board of Trustees

Notes to the financial statements

1. Accounting policies

Basis of preparation of the financial statements

The financial statements have been prepared in accordance with 'Charities SORP (FRS 102) — Accounting and Reporting by Charities: Statement of Recommended Practice applicable to charities preparing their accounts in accordance with the Financial Reporting Standard applicable in the UK and Republic of Ireland (FRS 102) second edition (effective 1 January 2019)', the Financial Reporting Standard applicable in the UK and Republic of Ireland (FRS 102) and the Companies Act 2006.

The effect of any event relating to the period ended 31 August 2022, which occurred before the date of approval of the financial statements by the Board of Trustees has been included in the financial statements to the extent required to show a true and fair view of the state of affairs at 31 August 2022 and the results for the year ended on that date.

Under the exemption available to smaller charities the Board of Trustees has chosen not to include a Statement of Cash Flows within the financial statements.

The functional currency of the charity is sterling. The amounts in the financial statements are rounded to the nearest pound.

Going concern

The financial statements have been prepared on the going concern basis as the Board of Trustees is confident that future reserves and future income is more than sufficient to meet current commitments. Whilst the trustees note that all current funding commitments end by the end of August 2023, the charity has a number of applications currently in process and is reviewing the situation on an ongoing basis to ensure that the charity can continue to meet liabilities as and when they fall due, and are confident that this remains the case.

Legal status

Maths on Toast is a charitable company limited by guarantee registered in England & Wales, and meets the definition of a public benefit entity under FRS 102. In the event of the Charity being wound up, the liability in respect of the guarantee is limited to £1 per member of the charity. The registered address is NCCSpace, Block D Hackney Community College, Falkirk St, London N1 6HQ.

Fund Accounting

General funds are unrestricted funds which are available for use at the discretion of the Trustees in furtherance of the general objectives of the Charity and which have not been designated for other purposes.

Restricted funds are funds that are to be used in accordance with specific restrictions imposed by donors or that have been raised by the Charity for particular purposes. The cost of raising and administering such funds are charged

against the specific fund. The aim and use of each restricted fund is set out in note 11 of the financial statements.

Income

Income is recognised when the charity has entitlement to the funds, any performance indicators attached to the item(s) of income have been met, it is probable that the income will be received, and the amount can be measured reliably.

Donations are recognised in full in the Statement of Financial Activities when entitled, receipt is probable and when the amount can be quantified with reasonable accuracy. Gift aid receivable is included when claimable.

Grant income is credited to the Statement of Financial Activities when received or receivable whichever is earlier, unless the grant relates to a future period, in which case it is deferred.

Income from charitable activities is credited to the Statement of Financial Activities when received or receivable whichever is earlier, unless it relates to a specific future period or event, in which case it is deferred.

Expenditure and irrecoverable VAT

All expenditure is accounted for on an accruals basis and has been included under expense categories that aggregate all costs for allocation to activities.

Indirect costs, including governance costs, which cannot be directly attributed to activities, are allocated proportionate to total direct costs allocated to each project area, as outlined in note 4 of the financial statements.

During the current year the cost allocation model has been reviewed and the prior year figures have been restated to account of this change.

Irrecoverable VAT is charged against the category of expenditure for which it was incurred.

Cash at bank and in hand

Cash at bank and in hand includes cash in hand, deposits with banks and funds that are readily convertible into cash at, or close to, their carrying values, but are not held for investment purposes.

Stock

Stock is valued at the lower of cost and net realisable value, after making due allowance for obsolete and slow moving items.

Debtors and prepayments

Trade and other debtors are recognised at the settlement amount after any trade discount is applied. Prepayments are valued at the amount prepaid net of any trade discounts due.

Creditors

Creditors are recognised where the charity has a present obligation resulting from a past event that will probably result in the transfer of funds to a third party, and the amount due to settle the obligation can be measured or estimated reliably.

Pensions

The charity operates a defined contribution pension schemes which is administered by an external independent pension provider. Contributions are recognised in the Statement of Financial Activities as they fall due.

Critical estimates and judgements

In preparing financial statements it is necessary to make certain judgements, estimates and assumptions that affect the amounts recognised in the financial statements. These assumptions are reassessed annually as part of the accounts preparation process.

In the view of the Trustees in applying the accounting policies adopted, no judgements were required that have a significant effect on the amounts recognised in the financial statements nor do any estimates or assumptions made carry a significant risk of material adjustment in the next financial year.

Financial instruments

Basic financial instruments are measured at amortised cost other than investments which are measured at fair value.

2. Income from donations and legacies

	Unrestricted Funds 2022	Restricted Funds 2022	Total Funds 2022	Unrestricted Funds 2021	Restricted Funds 2021	Total Funds 2021
John Lyon's Charity	-	15,000	15,000	-	22,000	22,000
Man Charitable Trust	29,167	-	29,167	50,000	-	50,000
Portal Trust/Sir John Cass's Foundation	-	-	-	-	22,230	22,230
HMRC Job Retention Scheme	-	-	-	1,846	-	1,846
Grants	29,167	15,000	44,167	51,846	44,230	96,076
Other donations and income	791	-	791	843	-	843
	29,958	15,000	44,958	52,689	44,230	96,919

3. Income from charitable activities

	Unrestricted Funds 2022	Restricted Funds 2022	Total Funds 2022	Unrestricted Funds 2021	Restricted Funds 2021	Total Funds 2021
Consultancy services	3,772	-	3,772	1,000	-	1,000
Sale of educational resources	3,874	-	3,874	2,832	-	2,832
	7,646	-	7,646	3,832	-	3,832

4. Total expenditure

	Direct staff costs 2022	Direct other costs 2022	Indirect staff costs 2022	Indirect other costs 2022	Total Funds 2022	Direct staff costs 2021	Direct other costs 2021	Indirect staff costs 2021	Indirect other costs 2021	Total Funds 2021
Raising funds	9,567	807	2,039	2,855	15,268	9,203	1,159	1,861	2,297	14,520
Charitable activities										
Community Maths	22,390	1,356	4,666	6,535	34,947	22,740	7,824	5,489	6,774	42,827
Partnerships & collaborations	17,554	25	3,454	4,838	25,871	17,838	-	3,203	3,954	24,995
Charitable activities	39,944	1,381	8,120	11,373	60,818	40,578	7,824	8,692	10,728	67,822
	49,511	2,188	10,159	14,228	76,086	49,781	8,983	10,553	13,025	82,342

Indirect costs have been allocated based on the proportion of direct costs attributable to each activity.

An analysis of staff costs can be found in note 7.

An analysis of raising funds split between restricted and unrestricted funds can be found in note 5.

An analysis of charitable activities split between restricted and unrestricted funds can be found in note 6

Indirect costs consists of the following:

	Total Funds 2022	Total Funds 2021
Indirect salaries	10,159	10,553
Other staff costs	1,728	163
Premises	6,600	6,888
Administration	3,739	4,129
Governance	2,160	1,845
	24,386	23,578

Governance costs includes the following expenses:

	Total Funds 2022	Total Funds 2021
Independent examination	1,080	765
Accounts preparation	1,080	1,080
	2,160	1,845

5. Expenditure on raising funds

	Unrestricted Funds 2022	Restricted Funds 2022	Total Funds 2022	Unrestricted Funds 2021	Restricted Funds 2021	Total Funds 2021
Direct costs	10,374	-	10,374	10,362	-	10,362
Indirect costs	4,894	-	4,894	4,158	-	4,158
	15,268	-	15,268	14,520	-	14,520

6. Expenditure on charitable activities

	Unrestricted Funds 2022	Restricted Funds 2022	Total Funds 2022	Unrestricted Funds 2021	Restricted Funds 2021	Total Funds 2021
Community Maths						
Direct costs	10,112	13,634	23,746	5,133	25,431	30,564
Indirect costs	11,024	177	11,201	8,912	3,351	12,263
	21,136	13,811	34,947	14,045	28,782	42,827
Partnerships & collaborations						
Direct costs	6,867	10,712	17,579	5,325	12,513	17,838
Indirect costs	8,275	17	8,292	5,508	1,649	7,157
	15,142	10,729	25,871	10,833	14,162	24,995
	36,278	24,540	60,818	24,878	42,944	67,822

7. Staff costs

	Total Funds 2022	Total Funds 2021
Gross salaries	58,641	59,303
Employer's pension	1,028	1,030
	59,669	60,333

The average headcount during the year was 4 (2021: 4).

No employee received employee benefits of more than £60,000 (2021: Nil).

The total employee benefits paid to key management personnel during the year was £19,963 (2021: £19,621).

8. Stock

	Total Funds 2022	<i>Total Funds 2021</i>
Number Rumbler	8,754	9,006
	8,754	<i>9,006</i>

9. Debtors

	Total Funds 2022	<i>Total Funds 2021</i>
Accounts receivable	100	-
Staff floats	250	500
Reimbursement due from HMRC	-	73
	350	<i>573</i>

10. Creditors — amounts falling due within one year

	Total Funds 2022	<i>Total Funds 2021</i>
Accounts payable	1,477	475
Accruals	2,304	2,610
Pensions payable	202	199
Deferred grant revenue	4,166	8,333
Credit card	56	192
	8,205	<i>11,809</i>

11. Analysis of charity funds

	Balance brought forward 2022	Income received in year 2022	Expenditure incurred in year 2022	Transfer between funds 2022	Balance carried forward 2022
Unrestricted funds					
General funds	80,318	37,604	(51,546)	-	66,376
Total unrestricted funds	80,318	37,604	(51,546)	-	66,376
Restricted funds					
John Lyon's Charity	5,058	15,000	(11,862)	-	8,196
John Lyon's Charity Activity Packs	135	-	(135)	-	-
Portal Trust/Sir John Cass's Foundation	12,543	-	(12,543)	-	-
Total restricted funds	17,736	15,000	(24,540)	-	8,196
Total funds	98,054	52,604	(76,086)	-	74,572

Restricted funds – John Lyon's Charity

This was a three-year grant supporting educational workshops and events primarily in the London Boroughs of Camden and Brent, but also in other London boroughs as permitted by the funder.

Restricted funds – John Lyon's Charity activity packs

This was a one-off grant to support work in producing activity packs during the COVID-19 pandemic.

Restricted funds – Portal Trust/Sir John Cass's Foundation

This is a two-year grant supporting educational workshops and events in the London Borough of Camden, but also in other London boroughs as permitted by the funder.

	<i>Balance brought forward 2021</i>	<i>Income received in year 2021</i>	<i>Expenditure incurred in year 2021</i>	<i>Transfer between funds 2021</i>	<i>Balance carried forward 2021</i>
Unrestricted funds					
General funds	63,195	56,521	(39,398)	-	80,318
Total unrestricted funds	<u>63,195</u>	<u>56,521</u>	<u>(39,398)</u>	<u>-</u>	<u>80,318</u>
Restricted funds					
John Lyon's Charity	2,723	15,000	(12,665)	-	5,058
John Lyon's Charity Activity Packs	-	7,000	(6,865)	-	135
Portal Trust/Sir					
John Cass's Foundation	13,727	22,230	(23,414)	-	12,543
Total restricted funds	<u>16,450</u>	<u>44,230</u>	<u>(42,944)</u>	<u>-</u>	<u>17,736</u>
Total funds	<u>79,645</u>	<u>100,751</u>	<u>(82,342)</u>	<u>-</u>	<u>98,054</u>

12. Analysis of net assets

	Unrestricted Funds 2022	Restricted Funds 2022	Total Funds 2022	<i>Unrestricted Funds 2021</i>	<i>Restricted Funds 2021</i>	<i>Total Funds 2021</i>
Current assets	74,581	8,196	82,777	69,897	39,966	109,863
Current liabilities	(8,205)	-	(8,205)	10,421	(22,230)	(11,809)
	<u>66,376</u>	<u>8,196</u>	<u>74,572</u>	<u>80,318</u>	<u>17,736</u>	<u>98,054</u>

13. Trustee remuneration

During the year, no trustee received any remuneration (2021: £Nil). No members of the Board of Trustees received reimbursement of expenses (2021: £Nil).

14. Related party transactions

During the year there were no transactions carried out with related parties (2021: £Nil).



If you would like to know
more, please get in touch...

020 7613 8389

info@mathsontost.org.uk

www.mathsontost.org.uk

[@mathsontost](https://www.instagram.com/mathsontost)

Donate online via our website:
[mathsontost.org.uk/support-us/
make-a-donation/](http://mathsontost.org.uk/support-us/make-a-donation/)

Maths on Toast is a charity based in
England and Wales

Registered charity no. 1151486

Registered company no. 08196529

Registered address: c/o NCC Space, Block D,
Hackney Community College, London N1 6HQ

Annual Report design: Aimee Capstick